

Ground Lights



Ground lights

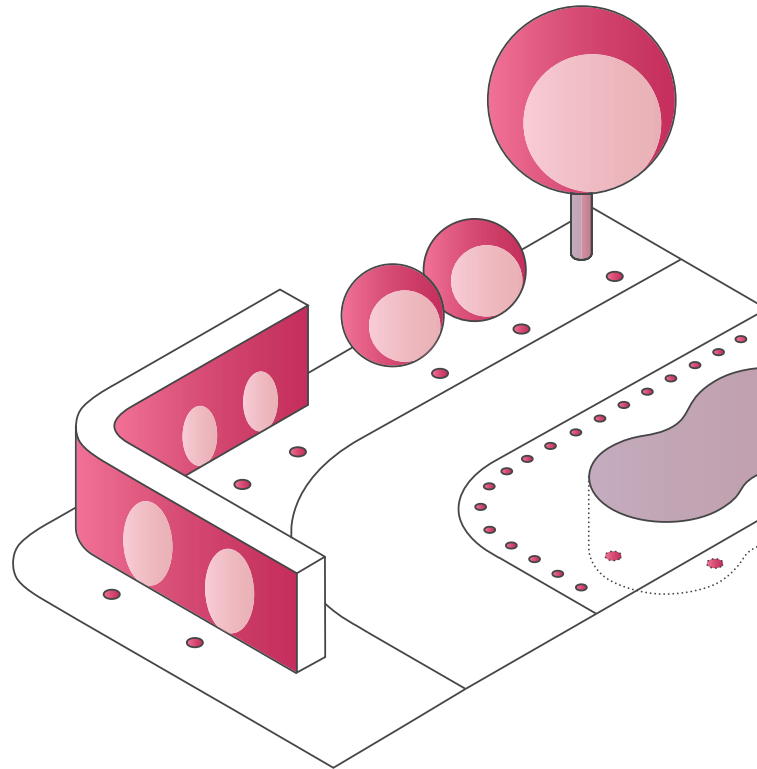
Highlighting features inside and out

Using ground lights in any light design can transform your space from dark and uninspiring to a perfectly illuminated space to suit any requirement.

What type of ground light?

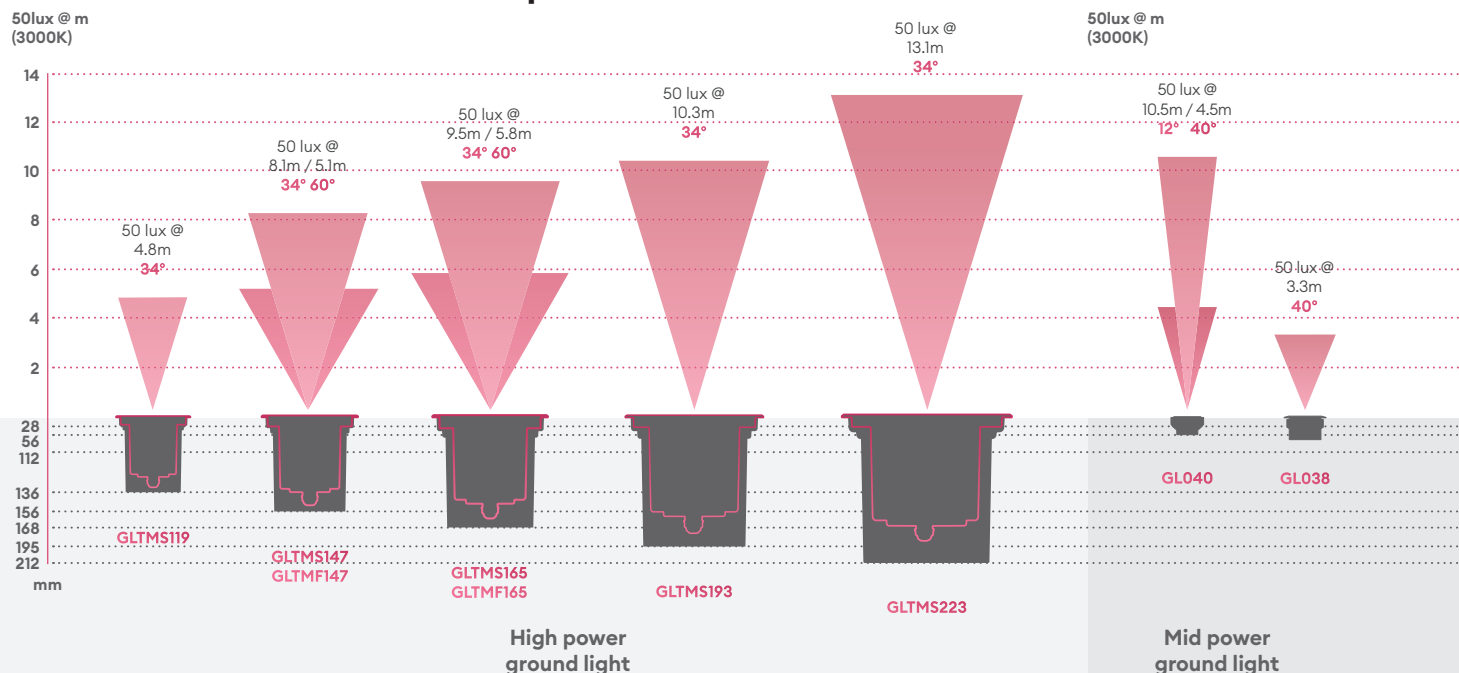
We offer the ideal ground light for every installation

- 1 High power ground light**
Powerful in output and large in scale, these fittings are ideal for illuminating tall trees and the façades of taller buildings.
- 2 Mid power ground light**
Choose these to light smaller façades, trees, shrubs and garden walls. These fittings can also be used inside large scale buildings to highlight architectural features.
- 3 Low power ground light**
Ideal for uplighting domestic façades and for use on wide steps and terraces with low level planting, these fittings can also be used inside to highlight architectural features. They can also be recessed into ceilings to provide small downlight options in display cases, alcoves or in showers.
- 4 Low glare ground light**
These fittings are ideal for use indoors or near terraces, seating areas and along pathways where people pass nearby.
- 5 Marker light**
Providing a subtle, diffused glow of light, these fittings are ideal for steps, pathways, driveways and car parks.
- 6 Underwater lighting**
IP68 and tested to 9m submersion.



Choose the ideal size and output

50lux @ m
(3000K)



Tilt ground light adjustable light module

Our Tilt ground light has the flexibility to turn the dial to adjust beam angle direction by $\pm 25^\circ$



Patented underwater technology

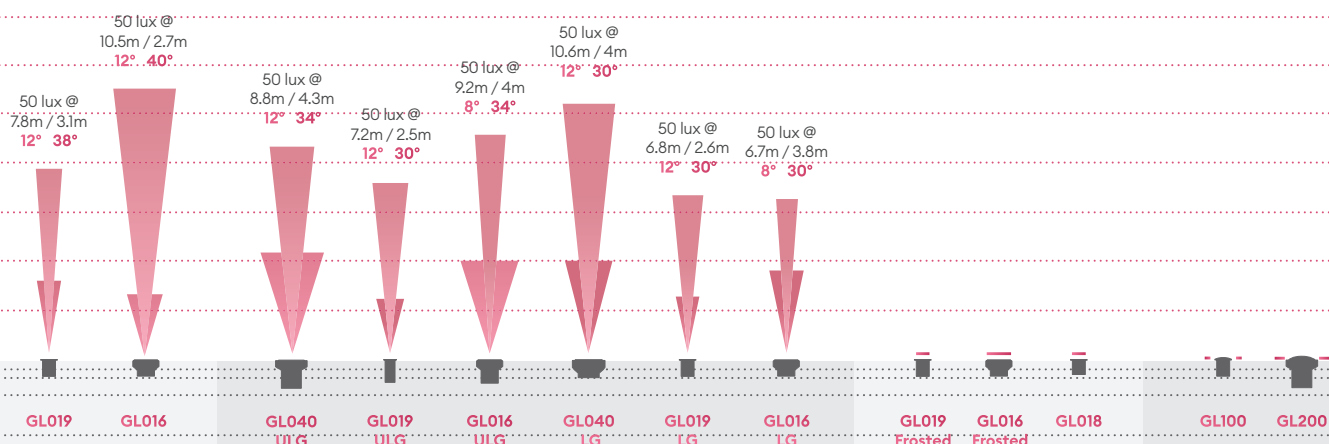
IP68 rated ground lights are completely air tight and can be used under water.

Our low voltage ground lights utilise patented technology, unique to Collingwood, the anti syphon bung prevents water ingress when submerged, from where the cable enters the product.



Fitting guide

Product Code	Cut-out	Depth	Depth with tube
GLTMS119	119mm	129mm	136mm
GLTMF147 GLTMS147	147mm	156mm	168mm
GLTMF165 GLTMS165	165mm	250mm	278mm
GLTMS193	193mm	175mm	195mm
GLTMS223	223mm	183mm	212mm
GL016 Range	50mm	60mm	102mm
GL016 ULG	28mm	78mm	132mm
GL018 Range	28mm	50mm	N/A
GL019 Range	33mm	60mm	102mm
GL019 ULG	33mm	90mm	132mm
GL038	80-85mm	60mm	190mm
GL040	65mm	60mm	102mm
GL040 ULG	65mm	110mm	132mm
GL100	33mm	60mm	109mm
GL200	65mm	80mm	150mm



Ground Lights

0.5W

0.5W at 24V DC



Frosted effect for low glare and soft lighting



Low voltage ground light

Guarantee

7 years

Features & benefits

Robust cable for outdoor use

Shallow depth for easy installation

Coastal protected

Easy and quick installation with parallel wiring



GL018 C

0.4W, 4lm mini round marker ground light

Features

IK rating	IK07
IP rating	IP68
CSP switchable	Single CCT
Walk over / Drive over	Walk over (Stainless Steel & Antique Brass Only)
Input	24V DC
LED lifetime	L70 30,000h
Colour rendering index	CRI>80
Colour consistency	SDCM3

Installation information

Cut out size (mm)	28
Bathroom zone	0
Inrush current	N/A
Construction material	Stainless steel (316)
Suitable for coastal areas	Yes
Weight	300g
Maximum ambient temperature	35°C
SELV	N/A
Electric class (1, 2, 3)	3
Earth leakage	N/A

Photometrics @ 25°C

Product code	Finish	W	CCT	∠°	lm	lm/W	Energy
GL018 C 27	Stainless steel	0.4W	2700K	120°	4	10	Exempt
GL018 C WW	Stainless steel	0.4W	3000K	120°	4	10	Exempt
GL018 C NW	Stainless steel	0.4W	4000K	120°	4	10	Exempt
GL018 C AB WW	Antique brass	0.4W	3000K	120°	4	10	Exempt

Energy rating is a reflection of the LED light source.

Wiring information

Cable / flying lead	1m (H05RN-F) rubberised cable (outside diameter: 6mm)
Type of wiring required	Parallel

Recommended LED drivers

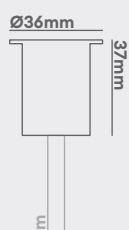
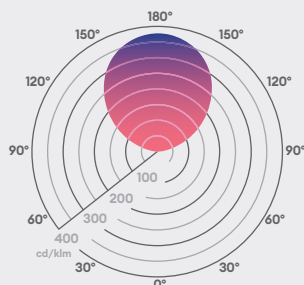
See pages 200 - 203 for complete LED driver offer

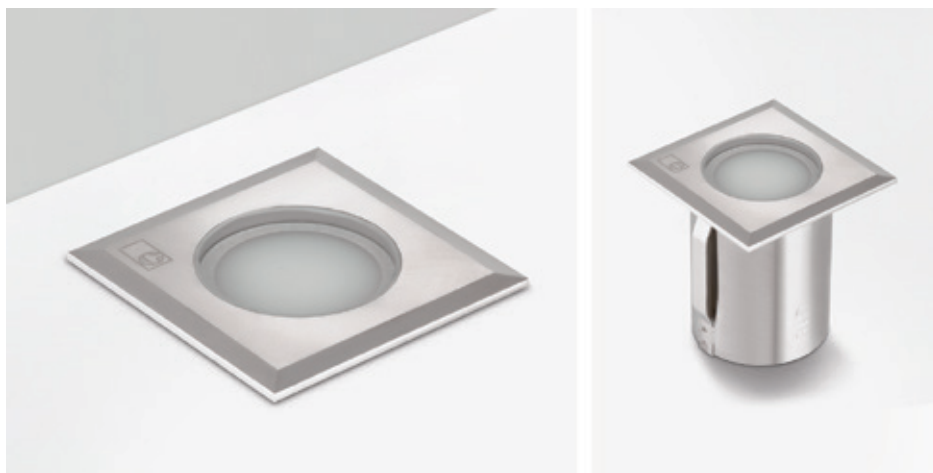
Product code	Input	SELV	Dimming	Bathroom zone	Products per driver
PSI524	220-240V	Yes	Yes (with PDCINT 1-10V)	0 (1 when dimming)	1-30
PS3024B	220-240V	Yes	Yes (with PDCINT 1-10V)	0 (1 when dimming)	1-60
LSD6024	220-240V	Yes	Yes (with PDCINT 1-10V)	0 (1 when dimming)	1-120

Accessories

JB1 / JB5 / JB6	IP68 waterproof connectors	Sold Separately	212
PDCINT1-10V	1-10V dimming interface for use with 24V LED drivers	Sold Separately	204

Beam angle: 120°





GL018 SQ

0.5W, 3lm square mini marker ground light

Features

IK rating	IK07
IP rating	IP68
CSP switchable	Single CCT
Walk over / Drive over	Walk over (Stainless Steel & Antique Brass Only)
Input	24V DC
LED lifetime	L70 30,000h
Colour rendering Index	CRI>80
Colour consistency	SDCM3

Installation information

Cut out size (mm)	28
Bathroom zone	0
Inrush current	N/A
Construction material	Stainless steel (316)
Suitable for coastal areas	Yes
Weight	300g
Maximum ambient temperature	35°C
SELV	N/A
Electric class (1, 2, 3)	3
Earth leakage	N/A

Photometrics @ 25°C

Product code	Finish	W	CCT	∠°	lm	lm/W	Energy
GL018 SQ.WW	Stainless steel	0.5W	3000K	120°	3	6	Exempt

Energy rating is a reflection of the LED light source.

Wiring information

Cable / flying lead	1m (H05RN-F) rubberised cable (outside diameter: 6mm)
Type of wiring required	Parallel

Recommended LED drivers

See pages 200 - 203 for complete LED driver offer

Product code	Input	SELV	Dimming	Bathroom zone	Products per driver
PS1524	220-240V	Yes	Yes (with PDCINT 1-10V)	0 (1 when dimming)	1-30
PS3024B	220-240V	Yes	Yes (with PDCINT 1-10V)	0 (1 when dimming)	1-60
LSD6024	220-240V	Yes	Yes (with PDCINT 1-10V)	0 (1 when dimming)	1-120

Accessories

JB1 / JB5 / JB6	IP68 waterproof connectors	Sold Separately	212
PDCINT1-10V	1-10V dimming interface for use with 24V LED drivers	Sold Separately	204

Ground Lights

0.5W

0.5W at 24V DC



Frosted effect for low glare and soft lighting



Low voltage ground light

Guarantee

3 years

Features & benefits

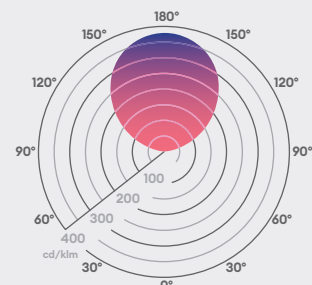
Square bezel for a different decorative effect

Robust cable for outdoor use

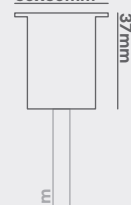
Shallow depth for easy installation

Easy and quick installation with parallel wiring

Beam angle: 120°



36x36mm







GL019 Round

Low Voltage Ground Light

Features

IK rating	IK07
IP rating	IP68
CSP switchable	Single CCT
Walk over / Drive over	Walk over (Stainless Steel & Antique Brass Only)
Input	150mA / 250mA / 350mA / 500mA / 700mA
LED lifetime	L70 70,000h
Colour rendering Index	CRI>80
Colour consistency	SDCM3

Installation information

Cut out size (mm)	33mm
Bathroom zone	0
Inrush current	N/A
Construction material	Stainless Steel
Suitable for coastal areas	Yes
Weight	204g
Maximum ambient temperature	55°C
SELV	N/A
Electric class (1, 2, 3)	3
Earth leakage	N/A

Photometrics @ 25°C

Product code	Finish	CCT	Beam angle	150mA			700mA			Energy
				W	lm	lm/W	W	lm	lm/W	
GL019RSS22F	Stainless steel 316	2200K	38°	0.4W	51	120	2.2W	196	89	100lm/W
GL019RSS22S	Stainless steel 316	2200K	12°	0.4W	51	120	2.2W	196	89	100lm/W
GL019RSS27F	Stainless steel 316	2700K	38°	0.4W	51	120	2.2W	169	89	100lm/W
GL019RSS27S	Stainless steel 316	2700K	12°	0.4W	51	120	2.2W	169	89	100lm/W
GL019RSS30F	Stainless steel 316	3000K	38°	0.4W	54	129	2.2W	210	95	100lm/W
GL019RSS30S	Stainless steel 316	3000K	12°	0.4W	54	129	2.2W	210	95	100lm/W
GL019RSS40F	Stainless steel 316	4000K	38°	0.4W	60	143	2.2W	234	106	100lm/W
GL019RSS40S	Stainless steel 316	4000K	12°	0.4W	60	143	2.2W	234	106	100lm/W

In the part code to replace your colour, change SS (Stainless Steel) to AB (Antique Brass) or BK (Black).
Energy rating is a reflection of the LED light source.

Wiring information

Cable / flying lead	1m (H05RN-F) rubberised cable (outside diameter: 6mm)
Type of wiring required	Series

Recommended LED drivers

See pages 200 - 203 for complete LED driver offer

Product code	Input	SELV	Dimming	Bathroom zone	Products per driver
DRV150700 (all settings)	220-240V	Yes	No	N/A	1-13
DRV350700TD (350 & 500mA)	220-240V	Yes	Yes	N/A	3-12
DRV350700TD (700mA)	220-240V	Yes	Yes	N/A	3-8

Accessories

JB2 / JB4 / JB6	IP68 waterproof connectors	Sold Separately	212
WCR 275 BLACK	2-core rubber cable	Sold Separately	213

Ground Lights

IP68

IP68 perfect for internal or external applications



Coastal protected

IK07

IK07 impact protection - walk over (Stainless Steel only)

Guarantee

7 years

Features & benefits

Supplied complete with installation tube

Low voltage ground light

SDCM3 ensuring uniform light appearance and consistency

CRI 80 providing true colour appearance

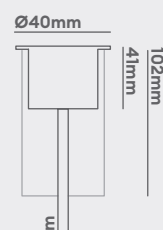
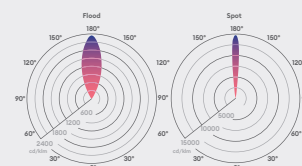
Available in a new 2200K setting to create a warm and cosy environment with minimal disruption to natural habitat

Compact yet powerful fitting

Robust cable for outdoor use

Available in an array of colours

Beam angle: 38° 12°



Ground Lights

IP68

IP68 perfect for internal or external applications



Coastal protected

IK07

IK07 impact protection - walk over (Stainless Steel only)

Guarantee

7 years

Features & benefits

Supplied complete with installation tube

Low voltage ground light

SDCM3 ensuring uniform light appearance and consistency

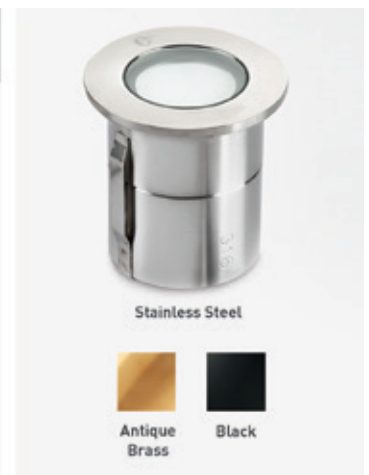
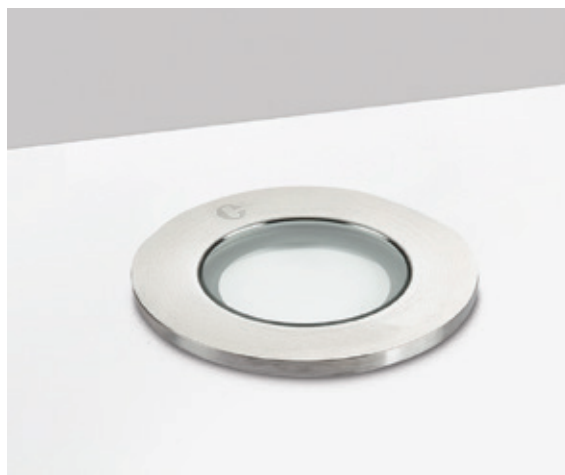
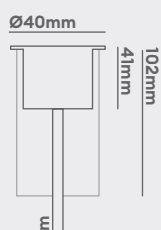
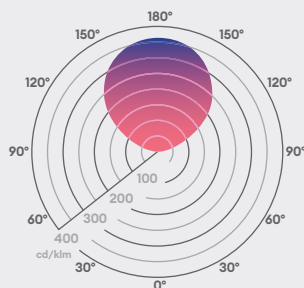
CRI 80 providing true colour appearance

Available in a new 2200K setting to create a warm and cosy environment with minimal disruption to natural habitat

Compact yet powerful fitting

Robust cable for outdoor use

Beam angle: 100°



GL019 Frosted

Low Voltage Ground Light

Features

IK rating	IK07
IP rating	IP68
CSP switchable	Single CCT
Walk over / Drive over	Walk over (Stainless Steel & Antique Brass Only)
Input	150mA / 250mA / 350mA
LED lifetime	L70 70,000h
Colour rendering Index	CRI>80
Colour consistency	SDCM3

Installation information

Cut out size (mm)	33mm
Bathroom zone	0
Inrush current	N/A
Construction material	Stainless Steel
Suitable for coastal areas	Yes
Weight	196g
Maximum ambient temperature	55°C
SELV	N/A
Electric class (1, 2, 3)	3
Earth leakage	N/A

Photometrics @ 25°C

Product code	Finish	CCT	Beam angle	150mA			350mA			Energy
				W	lm	lm/W	W	lm	lm/W	
GL019SSFD22	Stainless steel 316	2200K	100°	0.4W	11	27	1W	27	27	A C
GL019SSFD27	Stainless steel 316	2700K	100°	0.4W	13	33	1W	32	32	A C
GL019SSFD30	Stainless steel 316	3000K	100°	0.4W	13	33	1W	32	32	A C
GL019SSFD40	Stainless steel 316	4000K	100°	0.4W	13	33	1W	32	32	A C

In the part code to replace your colour change SS (Stainless Steel) to AB (Antique Brass) or BK (Black). **Important:** AB finish is made to order. Energy rating is a reflection of the LED light source.

Wiring information

Cable / flying lead	1m (H05RN-F) rubberised cable (outside diameter: 6mm)
Type of wiring required	Series

Recommended LED drivers

See pages 200 - 203 for complete LED driver offer

Product code	Input	SELV	Dimming	Bathroom zone	Products per driver
DRV150700 (150-350mA)	220-240V	Yes	No	N/A	1-13
DRV350700TD (350mA)	220-240V	Yes	Yes	N/A	3-12
PSIP35018W	220-240V	Yes	No	1	8-15

Accessories

JB2 / JB4 / JB6	IP68 waterproof connectors	Sold Separately	212
WCR 275 BLACK	2-core rubber cable	Sold Separately	213



Ground Lights

IP68

IP68 perfect for internal or external applications



Coastal protected

IK07

IK07 impact protection - walk over (Stainless Steel only)

Guarantee

7 years

Features & benefits

Supplied complete with installation tube

Low voltage ground light

SDCM3 ensuring uniform light appearance and consistency

CRI 80 providing true colour appearance

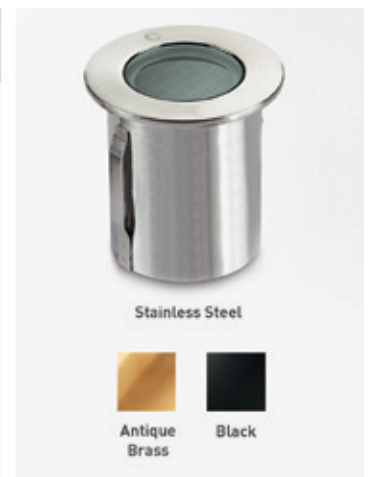
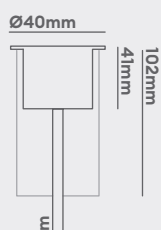
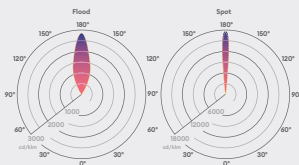
Available in a new 2200K setting to create a warm and cosy environment with minimal disruption to natural habitat

Compact yet powerful fitting

Robust cable for outdoor use

Available in an array of colours

Beam angle: 30° 12°



GL019 Low Glare

Low Voltage Ground Light

Features

IK rating	IK07
IP rating	IP68
CSP switchable	Single CCT
Walk over / Drive over	Walk over (Stainless Steel & Antique Brass Only)
Input	150mA / 250mA / 350mA / 500mA / 700mA
LED lifetime	L70 70,000h
Colour rendering Index	CRI>80
Colour consistency	SDCM3

Installation information

Cut out size (mm)	33mm
Bathroom zone	0
Inrush current	N/A
Construction material	Stainless Steel
Suitable for coastal areas	Yes
Weight	204g
Maximum ambient temperature	55°C
SELV	N/A
Electric class (1, 2, 3)	3
Earth leakage	N/A

Photometrics @ 25°C

Product code	Finish	CCT	Beam angle	150mA			700mA			Energy
				W	lm	lm/W	W	lm	lm/W	
GL019SSLG22F	Stainless steel 316	2200K	30°	0.4W	31	74	2.2W	120	55	100lm/W
GL019SSLG22S	Stainless steel 316	2200K	12°	0.4W	31	74	2.2W	120	55	100lm/W
GL019SSLG27F	Stainless steel 316	2700K	30°	0.4W	31	74	2.2W	120	55	100lm/W
GL019SSLG27S	Stainless steel 316	2700K	12°	0.4W	31	74	2.2W	120	55	100lm/W
GL019SSLG30F	Stainless steel 316	3000K	30°	0.4W	33	79	2.2W	128	58	100lm/W
GL019SSLG30S	Stainless steel 316	3000K	12°	0.4W	33	79	2.2W	128	58	100lm/W
GL019SSLG40F	Stainless steel 316	4000K	30°	0.4W	37	87	2.2W	143	65	100lm/W
GL019SSLG40S	Stainless steel 316	4000K	12°	0.4W	37	87	2.2W	143	65	100lm/W

In the part code to replace your colour, change SS (Stainless Steel) to AB (Antique Brass) or BK (Black). **Important:** BK & AB finish are made to order. Energy rating is a reflection of the LED light source.

Wiring information

Cable / flying lead	1m (H05RN-F) rubberised cable (outside diameter: 6mm)
Type of wiring required	Series

Recommended LED drivers

See pages 200 - 203 for complete LED driver offer

Product code	Input	SELV	Dimming	Bathroom zone	Products per driver
DRV150700 (all settings)	220-240V	Yes	No	N/A	1-13
DRV350700TD (350 & 500mA)	220-240V	Yes	Yes	N/A	3-12
DRV350700TD (700mA)	220-240V	Yes	Yes	N/A	3-8

Accessories

JB2 / JB4 / JB6	IP68 waterproof connectors	Sold Separately	212
WCR 275 BLACK	2-core rubber cable	Sold Separately	213



GL019 Ultra Low Glare

Low Voltage Ground Light

Features

IK rating	IK07
IP rating	IP68
CSP switchable	Single CCT
Walk over / Drive over	Walk over (Stainless Steel & Antique Brass Only)
Input	150mA / 250mA / 350mA
LED lifetime	L70 70,000h
Colour rendering Index	CRI>80
Colour consistency	SDCM3

Installation information

Cut out size (mm)	33mm
Bathroom zone	0
Inrush current	N/A
Construction material	Stainless Steel
Suitable for coastal areas	Yes
Weight	204g
Maximum ambient temperature	55°C
SELV	N/A
Electric class (1, 2, 3)	3
Earth leakage	N/A

Photometrics @ 25°C

Product code	Finish	CCT	Beam angle	150mA			350mA			Energy
				W	lm	lm/W	W	lm	lm/W	
GL019USS22F	Stainless steel 316	2200K	38°	0.4W	36	85	1W	77	77	D
GL019USS22S	Stainless steel 316	2200K	12°	0.4W	41	98	1W	89	89	D
GL019USS27F	Stainless steel 316	2700K	38°	0.4W	36	85	1W	77	77	D
GL019USS27S	Stainless steel 316	2700K	12°	0.4W	41	98	1W	89	89	D
GL019USS30F	Stainless steel 316	3000K	38°	0.4W	38	90	1W	82	82	D
GL019USS30S	Stainless steel 316	3000K	12°	0.4W	44	105	1W	95	95	D
GL019USS40F	Stainless steel 316	4000K	38°	0.4W	42	101	1W	91	91	D
GL019USS40S	Stainless steel 316	4000K	12°	0.4W	49	117	1W	106	106	D

In the part code to replace your colour change SS (Stainless Steel) to AB (Antique Brass) or BK (Black). **Important:** AB finish is made to order. Energy rating is a reflection of the LED light source.

Wiring information

Cable / flying lead	1m (H05RN-F) rubberised cable (outside diameter: 6mm)
Type of wiring required	Series

Recommended LED drivers

See pages 200 - 203 for complete LED driver offer

Product code	Input	SELV	Dimming	Bathroom zone	Products per driver
DRV150700 (all settings)	220-240V	Yes	No	N/A	1-13
DRV350700TD (350mA)	220-240V	Yes	Yes	N/A	3-12
PSIP35018W	220-240V	Yes	No	1	8-16

Accessories

JB2 / JB4 / JB6	IP68 waterproof connectors	Sold Separately	212
WCR 275 BLACK	2-core rubber cable	Sold Separately	213

Ground Lights

IP68

IP68 perfect for internal or external applications



Coastal protected

IK07

IK07 impact protection - walk over (Stainless Steel only)

Guarantee

7 years

Features & benefits

Supplied complete with installation tube

Low voltage ground light

SDCM3 ensuring uniform light appearance and consistency

CRI 80 providing true colour appearance

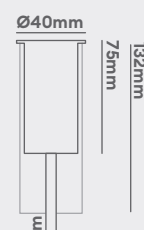
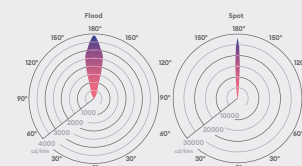
Available in a new 2200K setting to create a warm and cosy environment with minimal disruption to natural habitat

Compact yet powerful fitting

Robust cable for outdoor use

Available in an array of colours

Beam angle: 38° 12°



Ground Lights

IP68

IP68 perfect for internal or external applications



Coastal protected

IK07

IK07 impact protection - walk over (Stainless Steel only)

Guarantee

7 years

Features & benefits

Supplied complete with installation tube

Low voltage ground light

SDCM3 ensuring uniform light appearance and consistency

CRI 80 providing true colour appearance

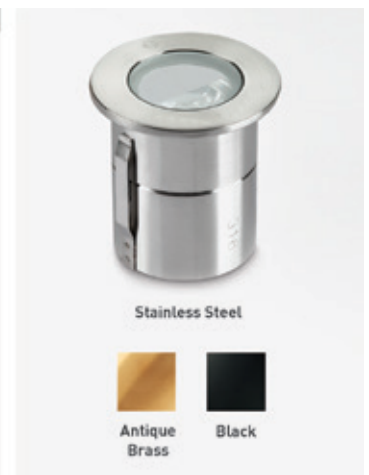
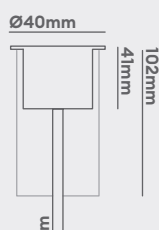
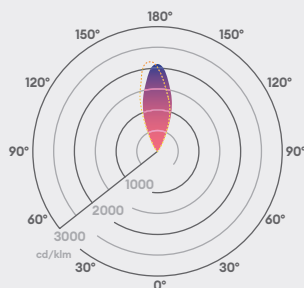
Available in a new 2200K setting to create a warm and cosy environment with minimal disruption to natural habitat

Compact yet powerful fitting

Robust cable for outdoor use

Available in an array of colours

Beam angle: 38°



GL019 Half Moon

Low Voltage Ground Light

Features

IK rating	IK07
IP rating	IP68
CSP switchable	Single CCT
Walk over / Drive over	Walk over (Stainless Steel & Antique Brass Only)
Input	150mA / 250mA / 350mA / 500mA / 700mA
LED lifetime	L70 70,000h
Colour rendering Index	CRI>80
Colour consistency	SDCM3

Installation information

Cut out size (mm)	33mm
Bathroom zone	0
Inrush current	N/A
Construction material	Stainless Steel
Suitable for coastal areas	Yes
Weight	204g
Maximum ambient temperature	55°C
SELV	N/A
Electric class (1, 2, 3)	3
Earth leakage	N/A

Photometrics @ 25°C

Product code	Finish	CCT	Beam angle	150mA			700mA			Energy
				W	lm	lm/W	W	lm	lm/W	
GL019SSH22	Stainless steel 316	2200K	38°	0.4W	34	80	2.2W	131	60	100lm/W
GL019SSH27	Stainless steel 316	2700K	38°	0.4W	34	80	2.2W	131	60	100lm/W
GL019SSH30	Stainless steel 316	3000K	38°	0.4W	36	86	2.2W	140	64	100lm/W
GL019SSH40	Stainless steel 316	4000K	38°	0.4W	40	95	2.2W	156	71	100lm/W

In the part code to replace your colour change SS (Stainless Steel) to AB (Antique Brass) or BK (Black). **Important:** All finishes are made to order. Energy rating is a reflection of the LED light source.

Wiring information

Cable / flying lead	1m (H05RN-F) rubberised cable (outside diameter: 6mm)
Type of wiring required	Series

Recommended LED drivers

See pages 200 - 203 for complete LED driver offer

Product code	Input	SELV	Dimming	Bathroom zone	Products per driver
DRV150700 (all settings)	220-240V	Yes	No	N/A	1-13
DRV350700TD (350 & 500mA)	220-240V	Yes	Yes	N/A	3-12
DRV350700TD (700mA)	220-240V	Yes	Yes	N/A	3-8

Accessories

JB2 / JB4 / JB6	IP68 waterproof connectors	Sold Separately	212
WCR 275 BLACK	2-core rubber cable	Sold Separately	213



GL019 Square

Low Voltage Ground Light

Features

IK rating	IK07
IP rating	IP68
CSP switchable	Single CCT
Walk over / Drive over	Walk over (Stainless Steel & Antique Brass Only)
Input	150mA / 250mA / 350mA / 500mA / 700mA
LED lifetime	L70 70,000h
Colour rendering Index	CRI>80
Colour consistency	SDCM3

Installation information

Cut out size (mm)	33mm
Bathroom zone	0
Inrush current	N/A
Construction material	Stainless Steel
Suitable for coastal areas	Yes
Weight	204g
Maximum ambient temperature	55°C
SELV	N/A
Electric class (1, 2, 3)	3
Earth leakage	N/A

Photometrics @ 25°C

Product code	Finish	CCT	Beam angle	150mA			700mA			Energy
				W	lm	lm/W	W	lm	lm/W	
GL019SQSS30F	Stainless steel 316	3000K	38°	0.4W	54	129	2.2W	210	95	100lm/W
GL019SQSS40F	Stainless steel 316	4000K	38°	0.4W	60	143	2.2W	234	106	100lm/W
GL019SQSS40S	Stainless steel 316	4000K	12°	0.4W	60	143	2.2W	234	106	100lm/W

In the part code to replace your colour, change SS (Stainless Steel) to AB (Antique Brass) or BK (Black). **Important:** BK & AB finish are made to order. Energy rating is a reflection of the LED light source.

Wiring information

Cable / flying lead	1m (H05RN-F) rubberised cable (outside diameter: 6mm)
Type of wiring required	Series

Recommended LED drivers

See pages 200 - 203 for complete LED driver offer

Product code	Input	SELV	Dimming	Bathroom zone	Products per driver
DRV150700 (all settings)	220-240V	Yes	No	N/A	1-13
DRV350700TD (350 & 500mA)	220-240V	Yes	Yes	N/A	3-12
DRV350700TD (700mA)	220-240V	Yes	Yes	N/A	3-8

Accessories

JB2 / JB4 / JB6	IP68 waterproof connectors	Sold Separately	212
WCR 275 BLACK	2-core rubber cable	Sold Separately	213

Ground Lights

IP68

IP68 perfect for internal or external applications



Coastal protected

IK07

IK07 impact protection - walk over (Stainless Steel only)

Guarantee

7 years

Features & benefits

Supplied complete with installation tube

Low voltage ground light

SDCM3 ensuring uniform light appearance and consistency

CRI 80 providing true colour appearance

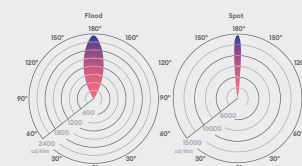
Available in a new 2200K setting to create a warm and cosy environment with minimal disruption to natural habitat

Compact yet powerful fitting

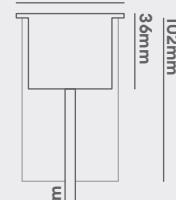
Robust cable for outdoor use

Available in an array of colours

Beam angle: 38° 12°



40x40mm



Ground Lights

IP68

IP68 perfect for internal or external applications



Coastal protected

IK07

IK07 impact protection - walk over (Stainless Steel only)

Guarantee

7 years

Features & benefits

Supplied complete with installation tube

Low voltage ground light

Walk over ground light ideal for paths or steps

SDCM3 ensuring uniform light appearance and consistency

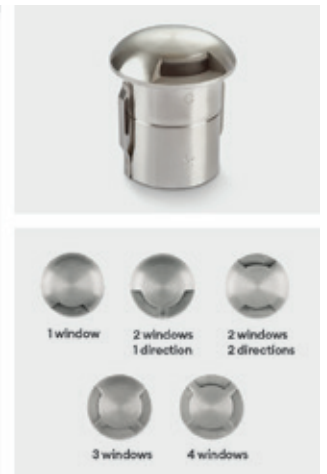
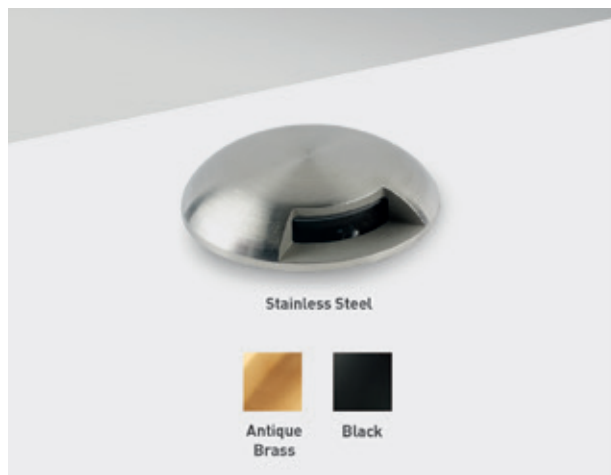
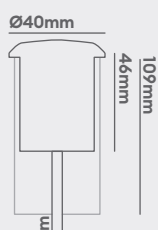
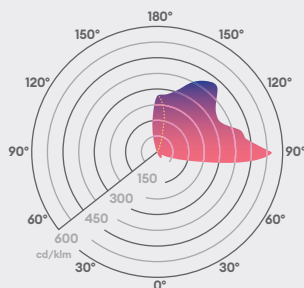
CRI 80 providing true colour appearance

Available in a new 2200K setting to create a warm and cosy environment with minimal disruption to natural habitat

Long-lifetime of 70,000hrs

Available in an array of colours

Beam angle: 75°



GL100 1 window

Domed Ground Light

Features

IK rating	IK07
IP rating	IP68
CSP switchable	Single CCT
Walk over / Drive over	Walk over (Stainless Steel & Antique Brass Only)
Input	150mA / 250mA / 350mA / 500mA / 700mA
LED lifetime	L70 70,000h
Colour rendering Index	CRI>80
Colour consistency	SDCM3

Installation information

Cut out size (mm)	33
Bathroom zone	0
Inrush current	N/A
Construction material	Stainless Steel
Suitable for coastal areas	Yes
Weight	GL100AB: 236g, GL100BK: TBC, GL100SS: 221g
Maximum ambient temperature	55°C
SELV	N/A
Electric class (1, 2, 3)	3
Earth leakage	N/A

Photometrics @ 25°C

Product code	Finish	Window	CCT	Beam angle	150mA			700mA			Energy
					W	lm	lm/W	W	lm	lm/W	
GL100SS1W22	Stainless steel 316	1 Window	2200K	75°	0.4W	1	3	2.2W	5	2	A D
GL100SS1W27	Stainless steel 316	1 Window	2700K	75°	0.4W	1	3	2.2W	5	2	A D
GL100SS1W30	Stainless steel 316	1 Window	3000K	75°	0.4W	1	3	2.2W	6	3	A D
GL100SS1W40	Stainless steel 316	1 Window	4000K	75°	0.4W	2	4	2.2W	6	3	A D

In the part code to replace your colour change SS (Stainless Steel) to AB (Antique Brass) or BK (Black). **Important:** BK finish is made to order. Energy rating is a reflection of the LED light source.

Wiring information

Cable / flying lead	1m (H05RN-F) rubberised cable (outside diameter: 6mm)
Type of wiring required	Series

Recommended LED drivers

See pages 200 - 203 for complete LED driver offer

Product code	Input	SELV	Dimming	Bathroom zone	Products per driver
DRV150700 (all settings)	220-240V	Yes	No	N/A	1-13
DRV350700TD (350 & 500mA)	220-240V	Yes	Yes	N/A	3-12
DRV350700TD (700mA)	220-240V	Yes	Yes	N/A	3-8

Accessories

JB2 / JB4 / JB6	IP68 waterproof connectors	Sold Separately	212
WCR 275 BLACK	2-core rubber cable	Sold Separately	213



GL100 2 windows 2 directions

Domed Ground Light

Features

IK rating	IK07
IP rating	IP68
CSP switchable	Single CCT
Walk over / Drive over	Walk over (Stainless Steel & Antique Brass Only)
Input	150mA / 250mA / 350mA / 500mA / 700mA
LED lifetime	L70 70,000h
Colour rendering Index	CRI>80
Colour consistency	SDCM3

Installation information

Cut out size (mm)	33
Bathroom zone	0
Inrush current	N/A
Construction material	Stainless Steel
Suitable for coastal areas	Yes
Weight	GL100AB: 231g, GL100BK: TBC, GL100SS: 217g
Maximum ambient temperature	55°C
SELV	N/A
Electric class (1, 2, 3)	3
Earth leakage	N/A

Photometrics @ 25°C

Product code	Finish	Window	CCT	°	150mA			700mA			Energy
					W	lm	lm/W	W	lm	lm/W	
GL100SS2O22	Stainless steel 316	2 Windows 2 Directions	2200K	75°	0.4W	3	6	2.2W	10	5	▶
GL100SS2O27	Stainless steel 316	2 Windows 2 Directions	2700K	75°	0.4W	3	6	2.2W	10	5	▶
GL100SS2O30	Stainless steel 316	2 Windows 2 Directions	3000K	75°	0.4W	3	7	2.2W	11	5	▶
GL100SS2O40	Stainless steel 316	2 Windows 2 Directions	4000K	75°	0.4W	3	8	2.2W	12	6	▶
GL100SS2W22	Stainless steel 316	2 Windows 1 Direction	2200K	75°	0.4W	3	6	2.2W	10	5	▶
GL100SS2W27	Stainless steel 316	2 Windows 1 Direction	2700K	75°	0.4W	3	6	2.2W	10	5	▶
GL100SS2W30	Stainless steel 316	2 Windows 1 Direction	3000K	75°	0.4W	3	7	2.2W	11	5	▶
GL100SS2W40	Stainless steel 316	2 Windows 1 Direction	4000K	75°	0.4W	3	8	2.2W	12	6	▶

In the part code to replace your colour change SS (Stainless Steel) to AB (Antique Brass) or BK (Black). **Important:** BK finish is made to order. Energy rating is a reflection of the LED light source.

Wiring information

Cable / flying lead	1m (H05RN-F) rubberised cable (outside diameter: 6mm)
Type of wiring required	Series

Recommended LED drivers

See pages 200 - 203 for complete LED driver offer

Product code	Input	SELV	Dimming	Bathroom zone	Products per driver
DRV150700 (all settings)	220-240V	Yes	No	N/A	1-13
DRV350700TD (350 & 500mA)	220-240V	Yes	Yes	N/A	3-12
DRV350700TD (700mA)	220-240V	Yes	Yes	N/A	3-8

Accessories

JB2 / JB4 / JB6	IP68 waterproof connectors	Sold Separately	212
-----------------	----------------------------	-----------------	-----

Ground Lights

IP68

IP68 perfect for internal or external applications



Coastal protected

IK07

IK07 impact protection - walk over (Stainless Steel only)

Guarantee

7 years

Features & benefits

Supplied complete with installation tube

Low voltage ground light

Walk over ground light ideal for paths or steps

SDCM3 ensuring uniform light appearance and consistency

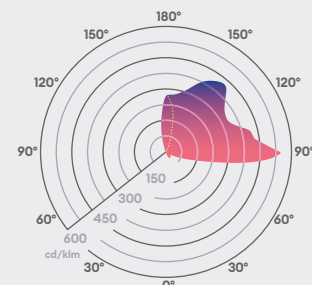
CRI 80 providing true colour appearance

Available in a new 2200K setting to create a warm and cosy environment with minimal disruption to natural habitat

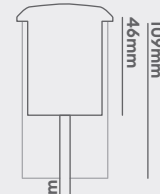
Long-lifetime of 70,000hrs

Available in an array of colours

Beam angle: 75°



Ø40mm



Ground Lights

IP68

IP68 perfect for internal or external applications



Coastal protected

IK07

IK07 impact protection - walk over (Stainless Steel only)

Guarantee

7 years

Features & benefits

Supplied complete with installation tube

Low voltage ground light

Walk over ground light ideal for paths or steps

SDCM3 ensuring uniform light appearance and consistency

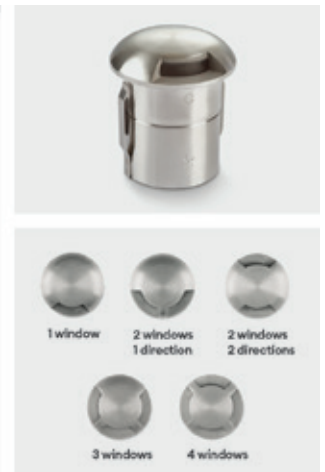
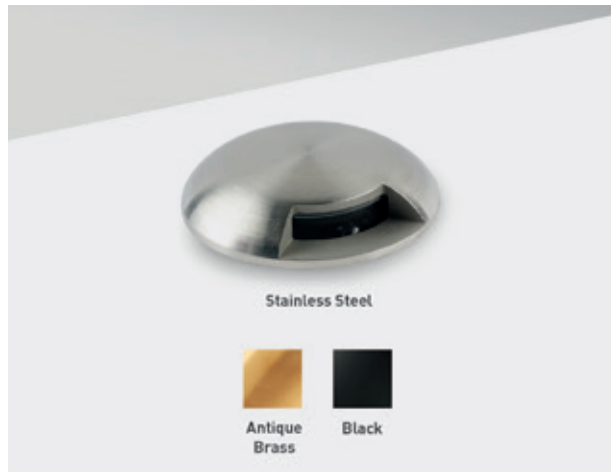
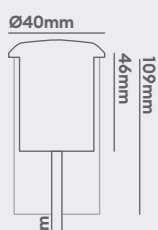
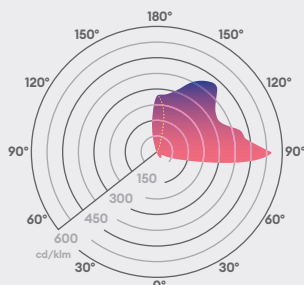
CRI 80 providing true colour appearance

Available in a new 2200K setting to create a warm and cosy environment with minimal disruption to natural habitat

Long-lifetime of 70,000hrs

Available in an array of colours

Beam angle: 75°



GL100 3 windows

Domed Ground Light

Features

IK rating	IK07
IP rating	IP68
CSP switchable	Single CCT
Walk over / Drive over	Walk over (Stainless Steel & Antique Brass Only)
Input	150mA / 250mA / 350mA / 500mA / 700mA
LED lifetime	L70 70,000h
Colour rendering Index	CRI>80
Colour consistency	SDCM3

Installation information

Cut out size (mm)	33
Bathroom zone	0
Inrush current	N/A
Construction material	Stainless Steel
Suitable for coastal areas	Yes
Weight	GL100AB: 228g, GL100BK: TBC, GL100SS: 215g
Maximum ambient temperature	55°C
SELV	N/A
Electric class (1, 2, 3)	3
Earth leakage	N/A

Photometrics @ 25°C

Product code	Finish	Window	CCT	Beam angle	150mA			700mA			Energy
					W	lm	lm/W	W	lm	lm/W	
GL100SS3W22	Stainless steel 316	3 Windows	2200K	75°	0.4W	4	10	2.2W	16	7	A D
GL100SS3W27	Stainless steel 316	3 Windows	2700K	75°	0.4W	4	10	2.2W	16	7	A D
GL100SS3W30	Stainless steel 316	3 Windows	3000K	75°	0.4W	4	10	2.2W	17	8	A D
GL100SS3W40	Stainless steel 316	3 Windows	4000K	75°	0.4W	5	11	2.2W	19	8	A D

In the part code to replace your colour change SS (Stainless Steel) to AB (Antique Brass) or BK (Black). **Important:** BK finish is made to order. Energy rating is a reflection of the LED light source.

Wiring information

Cable / flying lead	1m (H05RN-F) rubberised cable (outside diameter: 6mm)
Type of wiring required	Series

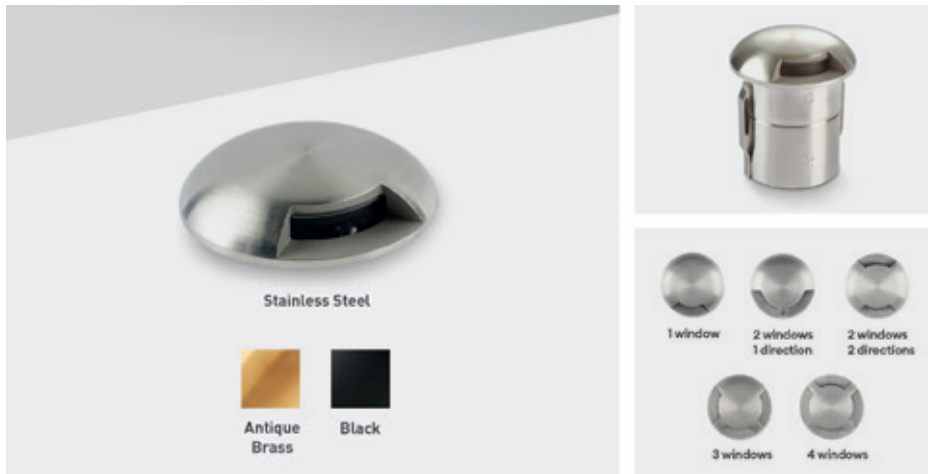
Recommended LED drivers

See pages 200 - 203 for complete LED driver offer

Product code	Input	SELV	Dimming	Bathroom zone	Products per driver
DRV150700 (all settings)	220-240V	Yes	No	N/A	1-13
DRV350700TD (350 & 500mA)	220-240V	Yes	Yes	N/A	3-12
DRV350700TD (700mA)	220-240V	Yes	Yes	N/A	3-8

Accessories

JB2 / JB4 / JB6	IP68 waterproof connectors	Sold Separately	212
WCR 275 BLACK	2-core rubber cable	Sold Separately	213



GL100 4 windows

Domed Ground Light

Features

IK rating	IK07
IP rating	IP68
CSP switchable	Single CCT
Walk over / Drive over	Walk over (Stainless Steel & Antique Brass Only)
Input	150mA / 250mA / 350mA / 500mA / 700mA
LED lifetime	L70 70,000h
Colour rendering Index	CRI>80
Colour consistency	SDCM3

Installation information

Cut out size (mm)	33
Bathroom zone	0
Inrush current	N/A
Construction material	Stainless Steel
Suitable for coastal areas	Yes
Weight	GL100AB: 221g, GL100BK: TBC, GL100SS: 212g
Maximum ambient temperature	55°C
SELV	N/A
Electric class (1, 2, 3)	3
Earth leakage	N/A

Photometrics @ 25°C

Product code	Finish	Window	CCT	Beam angle	150mA			700mA			Energy
					W	lm	lm/W	W	lm	lm/W	
GL100SS4W22	Stainless steel 316	4 Windows	2200K	75°	0.4W	5	11	2.2W	18	8	11 D
GL100SS4W27	Stainless steel 316	4 Windows	2700K	75°	0.4W	5	11	2.2W	18	8	11 D
GL100SS4W30	Stainless steel 316	4 Windows	3000K	75°	0.4W	5	12	2.2W	20	9	11 D
GL100SS4W40	Stainless steel 316	4 Windows	4000K	75°	0.4W	6	13	2.2W	22	10	11 D

In the part code to replace your colour change SS (Stainless Steel) to AB (Antique Brass) or BK (Black). **Important:** BK finish is made to order. Energy rating is a reflection of the LED light source.

Wiring information

Cable / flying lead	1m (H05RN-F) rubberised cable (outside diameter: 6mm)
Type of wiring required	Series

Recommended LED drivers

See pages 200 - 203 for complete LED driver offer

Product code	Input	SELV	Dimming	Bathroom zone	Products per driver
DRV150700 (all settings)	220-240V	Yes	No	N/A	1-13
DRV350700TD (350 & 500mA)	220-240V	Yes	Yes	N/A	3-12
DRV350700TD (700mA)	220-240V	Yes	Yes	N/A	3-8

Accessories

JB2 / JB4 / JB6	IP68 waterproof connectors	Sold Separately	212
WCR 275 BLACK	2-core rubber cable	Sold Separately	213

Ground Lights

IP68 IP68 perfect for internal or external applications

Coastal protected

IK07 IK07 impact protection - walk over (Stainless Steel only)

Guarantee

7 years

Features & benefits

Supplied complete with installation tube

Low voltage ground light

Walk over ground light ideal for paths or steps

SDCM3 ensuring uniform light appearance and consistency

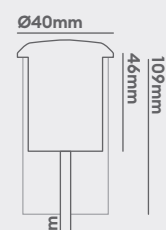
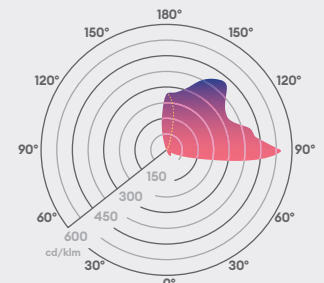
CRI 80 providing true colour appearance

Available in a new 2200K setting to create a warm and cosy environment with minimal disruption to natural habitat

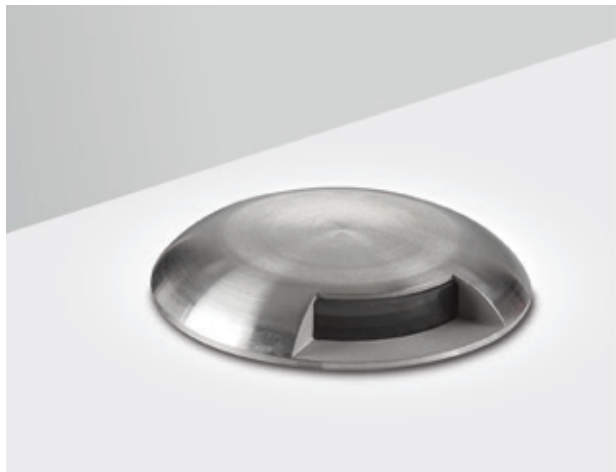
Long-lifetime of 70,000hrs

Available in an array of colours

Beam angle: 75°







GL200 (1-2 Windows)

5.7W, 40lm, domed ground light

Features

IK rating	IK10
IP rating	IP65
CSP switchable	Single CCT
Walk over / Drive over	Walk over (Stainless Steel & Antique Brass Only)
Input	220-240V AC
LED lifetime	L70 70,000h
Colour rendering Index	CRI>80
Colour consistency	SDCM3

Installation information

Cut out size (mm)	70
Bathroom zone	2
Inrush current	31A 0.12ms
Construction material	Stainless steel (316)
Suitable for coastal areas	Yes
Weight	960g
Maximum ambient temperature	35°C
SELV	Yes
Electric class (1, 2, 3)	1
Earth leakage	0.1mA

Photometrics @ 25°C

Product code	Finish	Window	W	CCT	∠°	lm	lm/W	Energy
GL200DX1X27	Stainless steel 316	1 Window	5.7W	2700K	90°	10	2	
GL200DX1X30	Stainless steel 316	1 Window	5.7W	3000K	90°	10	2	
GL200DX1X40	Stainless steel 316	1 Window	5.7W	4000K	90°	10	2	
GL200DX2127	Stainless steel 316	2 Windows 1 Direction	5.7W	2700K	90°	20	4	
GL200DX2130	Stainless steel 316	2 Windows 1 Direction	5.7W	3000K	90°	20	4	
GL200DX2140	Stainless steel 316	2 Windows 1 Direction	5.7W	4000K	90°	20	4	
GL200DX2227	Stainless steel 316	2 Windows 2 Directions	5.7W	2700K	90°	20	4	
GL200DX2230	Stainless steel 316	2 Windows 2 Directions	5.7W	3000K	90°	20	4	
GL200DX2240	Stainless steel 316	2 Windows 2 Directions	5.7W	4000K	90°	20	4	

Energy rating is a reflection of the LED light source.

Wiring information

Cable / flying lead	3m H05RN-F rubberised cable (outside diameter: 7mm)
Type of wiring required	Parallel

Accessories

JB5	Gell filled waterproof connector	Sold Separately	212
TUBE/68	Installation tube	Sold Separately	60
WC 5-9	Quick waterproof connector	Sold Separately	212

Ground Lights

5.7W

5.7W



Coastal protected



Straight to mains ground light

Guarantee

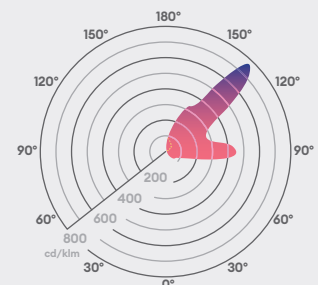
7 years

Features & benefits

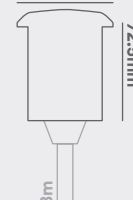
Marine grade stainless steel 316 or antique brass

5 window styles and colour temperatures to suit any installation

Beam angle: 90°



Ø76mm



Ground Lights

5.7W 5.7W



Coastal protected



Straight to mains ground light

Guarantee

7 years

Features & benefits

Marine grade stainless steel 316 or antique brass

5 window styles and colour temperatures to suit any installation



GL200 (3-4 Windows)

5.7W, 40lm, domed ground light

Features

IK rating	IK10
IP rating	IP65
CSP switchable	Single CCT
Walk over / Drive over	Walk over (Stainless Steel & Antique Brass Only)
Input	220-240V AC
LED lifetime	L70 70,000h
Colour rendering Index	CRI>80
Colour consistency	SDCM3

Installation information

Cut out size (mm)	70
Bathroom zone	2
Inrush current	31A 0.12ms
Construction material	Stainless steel (316)
Suitable for coastal areas	Yes
Weight	940g
Maximum ambient temperature	35°C
SELV	Yes
Electric class (1, 2, 3)	1
Earth leakage	0.1mA

Photometrics @ 25°C

Product code	Finish	Window	W	CCT	Beam angle	lm	lm/W	Energy
GL200DX3X27	Stainless steel 316	3 Windows	5.7W	2700K	90°	30	5	A E
GL200DX3X30	Stainless steel 316	3 Windows	5.7W	3000K	90°	30	5	A E
GL200DX4X27	Stainless steel 316	4 Windows	5.7W	2700K	90°	40	7	A E
GL200DX4X30	Stainless steel 316	4 Windows	5.7W	3000K	90°	40	7	A E
GL200DX4X40	Stainless steel 316	4 Windows	5.7W	4000K	90°	40	7	A D

Energy rating is a reflection of the LED light source.

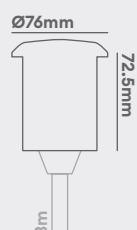
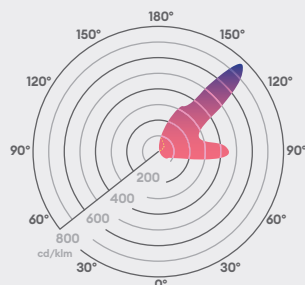
Wiring information

Cable / flying lead	3m H05RN-F rubberised cable (outside diameter: 7mm)
Type of wiring required	Parallel

Accessories

JB5	Gell filled waterproof connector	Sold Separately	212
TUBE/68	Installation tube	Sold Separately	60
WC 5-9	Quick waterproof connector	Sold Separately	212

Beam angle: 90°





Ground Lights

5.7W

5.7W



Coastal protected



Straight to mains ground light

Guarantee

7 years

Features & benefits

Marine grade stainless steel 316 or antique brass

5 window styles and colour temperatures to suit any installation



GL200 (1-2 Windows)

5.7W, 40lm, domed ground light

Features

IK rating	IK10
IP rating	IP65
CSP switchable	Single CCT
Walk over / Drive over	Walk over (Stainless Steel & Antique Brass Only)
Input	220-240V AC
LED lifetime	L70 70,000h
Colour rendering Index	CRI>80
Colour consistency	SDCM3

Installation information

Cut out size (mm)	70
Bathroom zone	2
Inrush current	31A 0.12ms
Construction material	Brass
Suitable for coastal areas	Yes
Weight	1060g
Maximum ambient temperature	35°C
SELV	Yes
Electric class (1, 2, 3)	1
Earth leakage	0.1mA

Photometrics @ 25°C

Product code	Finish	Window	W	CCT	Beam angle	lm	lm/W	Energy
GL200AX1X30	Antique brass	1 Window	5.7W	3000K	90°	10	2	A E
GL200AX2130	Antique brass	2 Windows 1 Direction	5.7W	3000K	90°	20	4	A E
GL200AX2230	Antique brass	2 Windows 2 Direction	5.7W	3000K	90°	20	4	A E

Energy rating is a reflection of the LED light source.

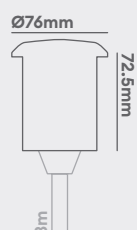
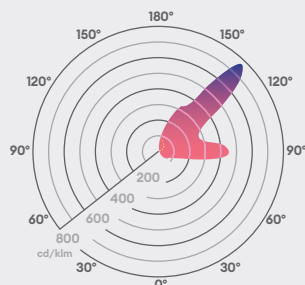
Wiring information

Cable / flying lead	3m H05RN-F rubberised cable (outside diameter: 7mm)
Type of wiring required	Parallel

Accessories

JB5	Gell filled waterproof connector	Sold Separately	212
TUBE/68	Installation tube	Sold Separately	60
WC 5-9	Quick waterproof connector	Sold Separately	212

Beam angle: 90°





GL200 (3-4 Windows)

5.7W, 40lm, domed ground light

Features

IK rating	IK10
IP rating	IP65
CSP switchable	Single CCT
Walk over / Drive over	Walk over (Stainless Steel & Antique Brass Only)
Input	220-240V AC
LED lifetime	L70 70,000h
Colour rendering Index	CRI>80
Colour consistency	SDCM3

Installation information

Cut out size (mm)	70
Bathroom zone	2
Inrush current	31A 0.12ms
Construction material	Brass
Suitable for coastal areas	Yes
Weight	1060g
Maximum ambient temperature	35°C
SELV	Yes
Electric class (1, 2, 3)	1
Earth leakage	0.1mA

Photometrics @ 25°C

Product code	Finish	Window	W	CCT	Beam angle	lm	lm/W	Energy
GL200AX3X30	Antique brass	3 Windows	5.7W	3000K	90°	30	5	
GL200AX4X30	Antique brass	4 Windows	5.7W	3000K	90°	40	7	

Energy rating is a reflection of the LED light source.

Wiring information

Cable / flying lead	3m H05RN-F rubberised cable (outside diameter: 7mm)
Type of wiring required	Parallel

Accessories

JB5	Gell filled waterproof connector	Sold Separately	212
TUBE/68	Installation tube	Sold Separately	60
WC 5-9	Quick waterproof connector	Sold Separately	212

Ground Lights

5.7W

5.7W



Coastal protected



Straight to mains ground light

Guarantee

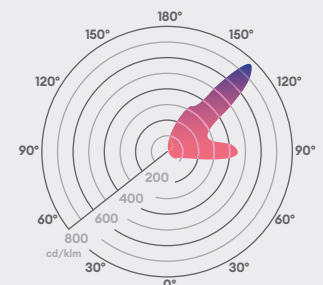
7 years

Features & benefits

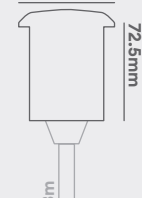
Marine grade stainless steel 316 or antique brass

5 window styles and colour temperatures to suit any installation

Beam angle: 90°



Ø76mm







GL016 Round

Low Voltage Ground Light

Features

IK rating	IK09
IP rating	IP68
CSP switchable	Single CCT
Walk over / Drive over	Walk over (Stainless Steel & Antique Brass Only)
Input	150mA / 250mA / 350mA / 500mA / 700mA
LED lifetime	L70 70,000h
Colour rendering Index	CRI>80
Colour consistency	SDCM3

Installation information

Cut out size (mm)	50mm
Bathroom zone	0
Inrush current	N/A
Construction material	Stainless Steel
Suitable for coastal areas	Yes
Weight	GL016AB: TBC, GL016BK: 180g, GL016SS: 400g
Maximum ambient temperature	55°C
SELV	Yes
Electric class (1, 2, 3)	3
Earth leakage	N/A

Photometrics @ 25°C

Product code	Finish	CCT	Beam angle	150mA			700mA			Energy
				W	lm	lm/W	W	lm	lm/W	
GL016RSS22F	Stainless steel 316	2200K	40°	0.4W	51	120	2.2W	196	89	100lm/W
GL016RSS22S	Stainless steel 316	2200K	12°	0.4W	51	120	2.2W	196	89	100lm/W
GL016RSS27F	Stainless steel 316	2700K	40°	0.4W	51	120	2.2W	169	89	100lm/W
GL016RSS27S	Stainless steel 316	2700K	12°	0.4W	51	120	2.2W	169	89	100lm/W
GL016RSS30F	Stainless steel 316	3000K	40°	0.4W	54	129	2.2W	210	95	100lm/W
GL016RSS30S	Stainless steel 316	3000K	12°	0.4W	54	129	2.2W	210	95	100lm/W
GL016RSS40F	Stainless steel 316	4000K	40°	0.4W	60	143	2.2W	234	106	100lm/W
GL016RSS40S	Stainless steel 316	4000K	12°	0.4W	60	143	2.2W	234	106	100lm/W

In the part code to replace your colour, change SS (Stainless Steel) to AB (Antique Brass) or BK (Black).

Energy rating is a reflection of the LED light source.

Wiring information

Cable / flying lead	1m (H05RN-F) rubberised cable (outside diameter: 6mm)
Type of wiring required	Series

Recommended LED drivers

See pages 200 - 203 for complete LED driver offer

Product code	Input	SELV	Dimming	Bathroom zone	Products per driver
DRV150700 (all settings)	220-240V	Yes	No	N/A	1-13
DRV350700TD (350 & 500mA)	220-240V	Yes	Yes	N/A	3-12
DRV350700TD (700mA)	220-240V	Yes	Yes	N/A	3-8

Accessories

JB2 / JB4 / JB6	IP68 waterproof connectors	Sold Separately	212
WCR 275 BLACK	2-core rubber cable	Sold Separately	213

Ground Lights

IP68

IP68 perfect for internal or external applications



Coastal protected

IK09

IK09 impact protection - walk over (Stainless Steel only)

Guarantee

7 years

Features & benefits

Supplied complete with installation tube

SDCM3 ensuring uniform light appearance and consistency

CRI 80 providing true colour appearance

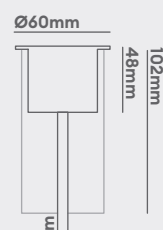
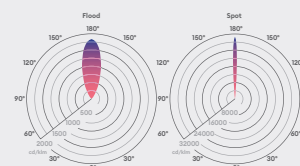
Available in a new 2200K setting to create a warm and cosy environment with minimal disruption to natural habitat

Robust cable for outdoor use

Shallow depth for easy installation

Available in an array of colours

Beam angle: 40° 12°



Ground Lights

IP68

IP68 perfect for internal or external applications



Coastal protected

IK09

IK09 impact protection - walk over (Stainless Steel only)

Guarantee

7 years

Features & benefits

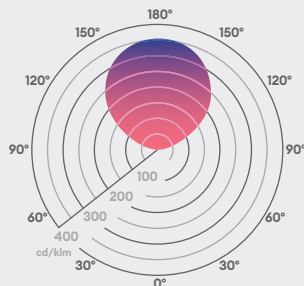
Supplied complete with installation tube

SDCM3 ensuring uniform light appearance and consistency

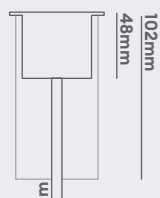
CRI 80 providing true colour appearance

Available in a new 2200K setting to create a warm and cosy environment with minimal disruption to natural habitat

Beam angle: 100°



Ø60mm



GL016 Frosted

Low Voltage Ground Light

Features

IK rating	IK09
IP rating	IP68
CSP switchable	Single CCT
Walk over / Drive over	Walk over (Stainless Steel & Antique Brass Only)
Input	150mA / 250mA / 350mA
LED lifetime	L70 70,000h
Colour rendering Index	CRI>80
Colour consistency	SDCM3

Installation information

Cut out size (mm)	50mm
Bathroom zone	0
Inrush current	N/A
Construction material	Stainless Steel
Suitable for coastal areas	Yes
Weight	GL016AB: TBC, GL016BK: 180g, GL016SS: 400g
Maximum ambient temperature	55°C
SELV	Yes
Electric class (1, 2, 3)	3
Earth leakage	N/A

Photometrics @ 25°C

Product code	Finish	CCT	Beam angle	150mA			350mA			Energy
				W	lm	lm/W	W	lm	lm/W	
GL016SSFD22	Stainless steel 316	2200K	100°	0.4W	12	29	1W	25	25	A C
GL016SSFD27	Stainless steel 316	2700K	100°	0.4W	14	35	1W	30	30	A C
GL016SSFD30	Stainless steel 316	3000K	100°	0.4W	14	35	1W	30	30	A C
GL016SSFD40	Stainless steel 316	4000K	100°	0.4W	14	35	1W	30	30	A C

In the part code to replace your colour change SS (Stainless Steel) to AB (Antique Brass) or BK (Black). **Important:** AB finish is made to order. Energy rating is a reflection of the LED light source.

Wiring information

Cable / flying lead	1m (H05RN-F) rubberised cable (outside diameter: 6mm)
Type of wiring required	Series

Recommended LED drivers

See pages 200 - 203 for complete LED driver offer

Product code	Input	SELV	Dimming	Bathroom zone	Products per driver
DRV150700 (150-350mA)	220-240V	Yes	No	N/A	1-13
DRV350700TD (350mA)	220-240V	Yes	Yes	N/A	3-12
PSIP35018W	220-240V	Yes	No	1	9-17

Accessories

JB2 / JB4 / JB6	IP68 waterproof connectors	Sold Separately	212
WCR 275 BLACK	2-core rubber cable	Sold Separately	213



Ground Lights

IP68

IP68 perfect for internal or external applications



Coastal protected

IK09

IK09 impact protection - walk over (Stainless Steel only)

Guarantee

7 years

Features & benefits

Supplied complete with installation tube

SDCM3 ensuring uniform light appearance and consistency

CRI 80 providing true colour appearance

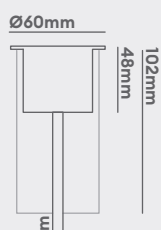
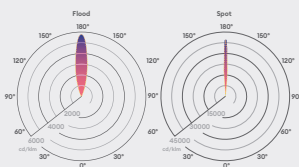
Available in a new 2200K setting to create a warm and cosy environment with minimal disruption to natural habitat

Robust cable for outdoor use

Shallow depth for easy installation

Available in an array of colours

Beam angle: 30° 8°



GL016 Low Glare

Low Voltage Ground Light

Features

IK rating	IK09
IP rating	IP68
CSP switchable	Single CCT
Walk over / Drive over	Walk over (Stainless Steel & Antique Brass Only)
Input	150mA / 250mA / 350mA / 500mA / 700mA
LED lifetime	L70 70,000h
Colour rendering Index	CRI>80
Colour consistency	SDCM3

Installation information

Cut out size (mm)	50mm
Bathroom zone	0
Inrush current	N/A
Construction material	Stainless Steel
Suitable for coastal areas	Yes
Weight	GL016AB: TBC, GL016BK: 180g, GL016SS: 400g
Maximum ambient temperature	55°C
SELV	Yes
Electric class (1, 2, 3)	3
Earth leakage	N/A

Photometrics @ 25°C

Product code	Finish	CCT	Beam angle	150mA			700mA			Energy
				W	lm	lm/W	W	lm	lm/W	
GL016SSLG22F	Stainless steel 316	2200K	30°	0.4W	31	74	2.2W	120	55	100lm/W
GL016SSLG22S	Stainless steel 316	2200K	8°	0.4W	31	74	2.2W	120	55	100lm/W
GL016SSLG27F	Stainless steel 316	2700K	30°	0.4W	31	74	2.2W	120	55	100lm/W
GL016SSLG27S	Stainless steel 316	2700K	8°	0.4W	31	74	2.2W	120	55	100lm/W
GL016SSLG30F	Stainless steel 316	3000K	30°	0.4W	33	79	2.2W	128	58	100lm/W
GL016SSLG30S	Stainless steel 316	3000K	8°	0.4W	33	79	2.2W	128	58	100lm/W
GL016SSLG40F	Stainless steel 316	4000K	30°	0.4W	37	87	2.2W	143	65	100lm/W
GL016SSLG40S	Stainless steel 316	4000K	8°	0.4W	37	87	2.2W	143	65	100lm/W

In the part code to replace your colour, change SS (Stainless Steel) to AB (Antique Brass) or BK (Black).
Energy rating is a reflection of the LED light source.

Wiring information

Cable / flying lead	1m (H05RN-F) rubberised cable (outside diameter: 6mm)
Type of wiring required	Series

Recommended LED drivers

See pages 200 - 203 for complete LED driver offer

Product code	Input	SELV	Dimming	Bathroom zone	Products per driver
DRV150700 (all settings)	220-240V	Yes	No	N/A	1-13
DRV350700TD (350 & 500mA)	220-240V	Yes	Yes	N/A	3-12
DRV350700TD (700mA)	220-240V	Yes	Yes	N/A	3-8

Accessories

JB2 / JB4 / JB6	IP68 waterproof connectors	Sold Separately	212
WCR 275 BLACK	2-core rubber cable	Sold Separately	213



GL016 Ultra Low Glare

Low Voltage Ground Light

Features

IK rating	IK09
IP rating	IP68
CSP switchable	Single CCT
Walk over / Drive over	Walk over (Stainless Steel & Antique Brass Only)
Input	150mA / 250mA / 350mA
LED lifetime	L70 70,000h
Colour rendering Index	CRI>80
Colour consistency	SDCM3

Installation information

Cut out size (mm)	50mm
Bathroom zone	0
Inrush current	N/A
Construction material	Stainless Steel
Suitable for coastal areas	Yes
Weight	GL016AB: TBC, GL016BK: 180g, GL016SS: 400g
Maximum ambient temperature	55°C
SELV	Yes
Electric class (1, 2, 3)	3
Earth leakage	N/A

Photometrics @ 25°C

Product code	Finish	CCT	Beam angle	150mA			350mA			Energy
				W	lm	lm/W	W	lm	lm/W	
GL016USS22F	Stainless steel 316	2200K	34°	0.4W	51	120	1W	109	109	100lm/W
GL016USS27F	Stainless steel 316	2700K	34°	0.4W	51	120	1W	109	109	100lm/W
GL016USS30F	Stainless steel 316	3000K	34°	0.4W	54	129	1W	116	116	100lm/W
GL016USS40F	Stainless steel 316	4000K	34°	0.4W	60	143	1W	129	129	100lm/W

In the part code to replace your colour change SS (Stainless Steel) to AB (Antique Brass) or BK (Black). **Important:** All finishes are made to order. Energy rating is a reflection of the LED light source.

Wiring information

Cable / flying lead	1m (H05RN-F) rubberised cable (outside diameter: 6mm)
Type of wiring required	Series

Recommended LED drivers

See pages 200 - 203 for complete LED driver offer

Product code	Input	SELV	Dimming	Bathroom zone	Products per driver
DRV150700 (all settings)	220-240V	Yes	No	N/A	1-13
DRV350700TD (350mA)	220-240V	Yes	Yes	N/A	3-12
PSIP35018W	220-240V	Yes	No	1	8-16

Accessories

JB2 / JB4 / JB6	IP68 waterproof connectors	Sold Separately	212
WCR 275 BLACK	2-core rubber cable	Sold Separately	213

Ground Lights

IP68

IP68 perfect for internal or external applications



Coastal protected

IK09

IK09 impact protection - walk over (Stainless Steel only)

Guarantee

7 years

Features & benefits

Supplied complete with installation tube

SDCM3 ensuring uniform light appearance and consistency

CRI 80 providing true colour appearance

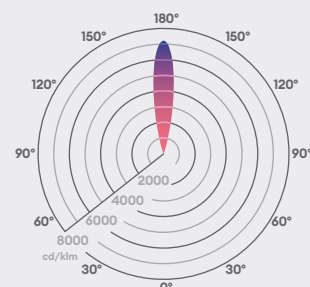
Available in a new 2200K setting to create a warm and cosy environment with minimal disruption to natural habitat

Robust cable for outdoor use

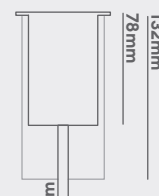
Shallow depth for easy installation

Available in an array of colours

Beam angle: 34°



Ø60mm



Ground Lights

IP68

IP68 perfect for internal or external applications



Coastal protected

IK09

IK09 impact protection - walk over (Stainless Steel only)

Guarantee

7 years

Features & benefits

Supplied complete with installation tube

SDCM3 ensuring uniform light appearance and consistency

CRI 80 providing true colour appearance

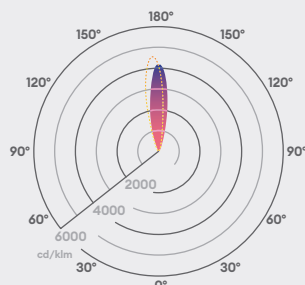
Available in a new 2200K setting to create a warm and cosy environment with minimal disruption to natural habitat

Robust cable for outdoor use

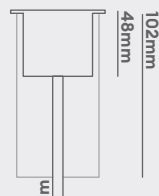
Shallow depth for easy installation

Available in an array of colours

Beam angle: 20°



Ø60mm



Stainless Steel



Antique Brass



Black

GL016 Half Moon

Low Voltage Ground Light

Features

IK rating	IK09
IP rating	IP68
CSP switchable	Single CCT
Walk over / Drive over	Walk over (Stainless Steel & Antique Brass Only)
Input	150mA / 250mA / 350mA / 500mA / 700mA
LED lifetime	L70 70,000h
Colour rendering Index	CRI>80
Colour consistency	SDCM3

Installation information

Cut out size (mm)	50mm
Bathroom zone	0
Inrush current	N/A
Construction material	Stainless Steel
Suitable for coastal areas	Yes
Weight	GL016AB: TBC, GL016BK: 180g, GL016SS: 400g
Maximum ambient temperature	55°C
SELV	Yes
Electric class (1, 2, 3)	3
Earth leakage	N/A

Photometrics @ 25°C

Product code	Finish	CCT	Beam angle	150mA			700mA			Energy
				W	lm	lm/W	W	lm	lm/W	
GL016SSH22	Stainless steel 316	2200K	20°	0.4W	19	46	2.2W	75	38	100lm/W
GL016SSH27	Stainless steel 316	2700K	20°	0.4W	19	46	2.2W	75	38	100lm/W
GL016SSH30	Stainless steel 316	3000K	20°	0.4W	21	49	2.2W	80	36	100lm/W
GL016SSH40	Stainless steel 316	4000K	20°	0.4W	23	54	2.2W	89	40	100lm/W

In the part code to replace your colour change SS (Stainless Steel) to AB (Antique Brass) or BK (Black). **Important:** All finishes are made to order. Energy rating is a reflection of the LED light source.

Wiring information

Cable / flying lead	1m (H05RN-F) rubberised cable (outside diameter: 6mm)
Type of wiring required	Series

Recommended LED drivers

See pages 200 - 203 for complete LED driver offer

Product code	Input	SELV	Dimming	Bathroom zone	Products per driver
DRV150700 (all settings)	220-240V	Yes	No	N/A	1-13
DRV350700TD (350 & 500mA)	220-240V	Yes	Yes	N/A	3-12
DRV350700TD (700mA)	220-240V	Yes	Yes	N/A	3-8

Accessories

JB2 / JB4 / JB6	IP68 waterproof connectors	Sold Separately	212
WCR 275 BLACK	2-core rubber cable	Sold Separately	213



GL016 Square

Low Voltage Ground Light

Features

IK rating	IK09
IP rating	IP68
CSP switchable	Single CCT
Walk over / Drive over	Walk over (Stainless Steel & Antique Brass Only)
Input	150mA / 250mA / 350mA / 500mA / 700mA
LED lifetime	L70 70,000h
Colour rendering Index	CRI>80
Colour consistency	SDCM3

Installation information

Cut out size (mm)	50mm
Bathroom zone	0
Inrush current	N/A
Construction material	Stainless Steel
Suitable for coastal areas	Yes
Weight	GL016AB: TBC, GL016BK: 180g, GL016SS: 400g
Maximum ambient temperature	55°C
SELV	Yes
Electric class (1, 2, 3)	3
Earth leakage	N/A

Photometrics @ 25°C

Product code	Finish	CCT	Beam angle	150mA			700mA			Energy
				W	lm	lm/W	W	lm	lm/W	
GL016SQSS27F	Stainless steel 316	2200K	40°	0.4W	51	120	2.2W	196	89	100lm/W
GL016SQSS30F	Stainless steel 316	2200K	40°	0.4W	51	129	2.2W	196	95	100lm/W
GL016SQSS40F	Stainless steel 316	2200K	40°	0.4W	51	143	2.2W	196	106	100lm/W

In the part code to replace your colour, change SS (Stainless Steel) to AB (Antique Brass) or BK (Black). **Important:** BK & AB finish are made to order. Energy rating is a reflection of the LED light source.

Wiring information

Cable / flying lead	1m (H05RN-F) rubberised cable (outside diameter: 6mm)
Type of wiring required	Series

Recommended LED drivers

See pages 200 - 203 for complete LED driver offer

Product code	Input	SELV	Dimming	Bathroom zone	Products per driver
DRV150700 (all settings)	220-240V	Yes	No	N/A	1-13
DRV350700TD (350 & 500mA)	220-240V	Yes	Yes	N/A	3-12
DRV350700TD (700mA)	220-240V	Yes	Yes	N/A	3-8

Accessories

JB2 / JB4 / JB6	IP68 waterproof connectors	Sold Separately	212
WCR 275 BLACK	2-core rubber cable	Sold Separately	213

Ground Lights

IP68

IP68 perfect for internal or external applications



Coastal protected

IK09

IK09 impact protection - walk over (Stainless Steel only)

Guarantee

7 years

Features & benefits

Supplied complete with installation tube

SDCM3 ensuring uniform light appearance and consistency

CRI 80 providing true colour appearance

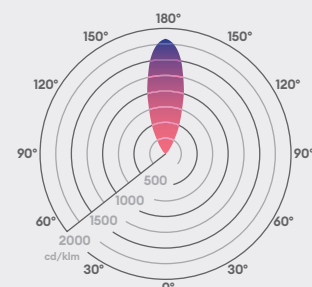
Available in a new 2200K setting to create a warm and cosy environment with minimal disruption to natural habitat

Robust cable for outdoor use

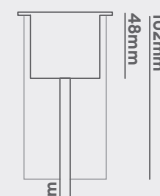
Shallow depth for easy installation

Available in an array of colours

Beam angle: 40°



60x60mm



Ground Lights

IP68

IP65 perfect for internal or external applications



Coastal protected

IK08

IK08 impact protection - walk over (Stainless Steel only)

Guarantee

7 years

Features & benefits

Supplied complete with installation tube

SDCM3 ensuring uniform light appearance and consistency

Single LED and lens combination for maximum efficiency and optimal light distribution

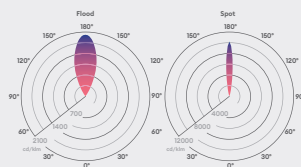
CRI 80 providing true colour appearance

Available in a new 2200K setting to create a warm and cosy environment with minimal disruption to natural habitat

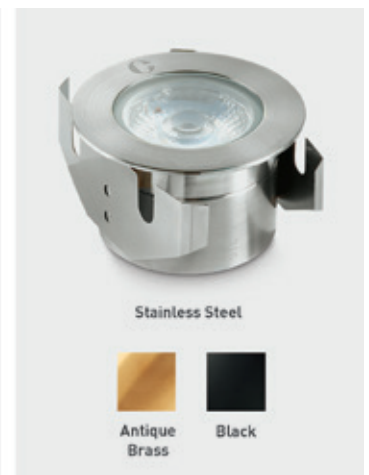
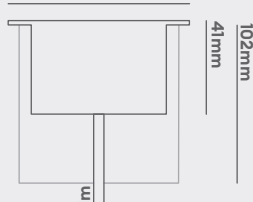
Long lifetime of 70,000hrs

Available in an array of colours

Beam angle: 40° 12°



Ø76mm



GL040 Round

Modular Ground Light

Features

IK rating	IK08
IP rating	IP68
CSP switchable	Single CCT
Walk over / Drive over	Walk over (Stainless Steel & Antique Brass Only)
Input	150mA / 250mA / 350mA / 500mA / 700mA
LED lifetime	L70 70,000h
Colour rendering Index	CRI>80
Colour consistency	SDCM3

Installation information

Cut out size (mm)	70mm
Bathroom zone	0
Inrush current	N/A
Construction material	Stainless Steel
Suitable for coastal areas	Yes
Weight	GL040AB: 600g, GL040BK: TBC, GL040SS: 720g
Maximum ambient temperature	55°C
SELV	N/A
Electric class (1, 2, 3)	3
Earth leakage	N/A

Photometrics @ 25°C

Product code	Finish	CCT	Beam angle	150mA			700mA			Energy
				W	lm	lm/W	W	lm	lm/W	
GL040RSS22F	Stainless steel 316	2200K	40°	0.8W	108	135	4.6W	431	94	100lm/W
GL040RSS22S	Stainless steel 316	2200K	12°	0.8W	108	135	4.6W	431	94	100lm/W
GL040RSS27F	Stainless steel 316	2700K	40°	0.8W	129	161	4.6W	515	112	100lm/W
GL040RSS27S	Stainless steel 316	2700K	12°	0.8W	129	161	4.6W	515	112	100lm/W
GL040RSS30F	Stainless steel 316	3000K	40°	0.8W	130	163	4.6W	520	113	100lm/W
GL040RSS30S	Stainless steel 316	3000K	12°	0.8W	130	163	4.6W	520	113	100lm/W
GL040RSS40F	Stainless steel 316	4000K	40°	0.8W	134	168	4.6W	538	117	100lm/W
GL040RSS40S	Stainless steel 316	4000K	12°	0.8W	134	168	4.6W	538	117	100lm/W

In the part code to replace your colour change SS (Stainless Steel) to AB (Antique Brass) or BK (Black). **Important:** BK finish is made to order. Energy rating is a reflection of the LED light source.

Wiring information

Cable / flying lead	1m (H05RN-F) rubberised cable (outside diameter: 6mm)
Type of wiring required	Series

Recommended LED drivers

See pages 200 - 203 for complete LED driver offer

Product code	Input	SELV	Dimming	Bathroom zone	Products per driver
DRV150700 (all settings)	220-240V	Yes	No	N/A	1-6
DRV350700TD (700mA)	220-240V	Yes	Yes	N/A	2-4
PSMD70024	220-240V	Yes	Yes	N/A	1-2

Accessories

JB2 / JB4 / JB6	IP68 waterproof connectors	Sold Separately	212
WCR 275 BLACK	2-core rubber cable	Sold Separately	213



GL040 Frosted

Modular Ground Light

Features

IK rating	IK08
IP rating	IP68
CSP switchable	Single CCT
Walk over / Drive over	Walk over (Stainless Steel & Antique Brass Only)
Input	150mA / 250mA / 350mA
LED lifetime	L70 70,000h
Colour rendering Index	CRI>80
Colour consistency	SDCM3

Installation information

Cut out size (mm)	70mm
Bathroom zone	1
Inrush current	N/A
Construction material	Stainless Steel
Suitable for coastal areas	Yes
Weight	GL040AB: 600g, GL040BK: TBC, GL040SS: 720g
Maximum ambient temperature	55°C
SELV	N/A
Electric class (1, 2, 3)	3
Earth leakage	N/A

Photometrics @ 25°C

Product code	Finish	CCT	Beam angle	150mA			350mA			Energy
				W	lm	lm/W	W	lm	lm/W	
GL040SSFD22	Stainless steel 316	2200K	100°	0.4W	19	48	1W	45	45	A C
GL040SSFD27	Stainless steel 316	2700K	100°	0.4W	23	57	1W	56	56	A C
GL040SSFD30	Stainless steel 316	3000K	100°	0.4W	23	58	1W	56	56	A C
GL040SSFD40	Stainless steel 316	4000K	100°	0.4W	24	59	1W	56	56	A C

In the part code to replace your colour change SS (Stainless Steel) to AB (Antique Brass) or BK (Black). **Important:** All finishes are made to order. Energy rating is a reflection of the LED light source.

Wiring information

Cable / flying lead	1m (H05RN-F) rubberised cable (outside diameter: 6mm)
Type of wiring required	Series

Recommended LED drivers

See pages 200 - 203 for complete LED driver offer

Product code	Input	SELV	Dimming	Bathroom zone	Products per driver
DRV150700 (150-350mA)	220-240V	Yes	No	N/A	1-13
DRV350700TD (350mA)	220-240V	Yes	Yes	N/A	3-12
PSIP35018W	220-240V	Yes	No	1	8-15

Accessories

JB2 / JB4 / JB6	IP68 waterproof connectors	Sold Separately	212
WCR 275 BLACK	2-core rubber cable	Sold Separately	213

Ground Lights

IP68

IP65 perfect for internal or external applications



Coastal protected

IK08

IK08 impact protection - walk over (Stainless Steel only)

Guarantee

7 years

Features & benefits

Supplied complete with installation tube

SDCM3 ensuring uniform light appearance and consistency

Single LED and lens combination for maximum efficiency and optimal light distribution

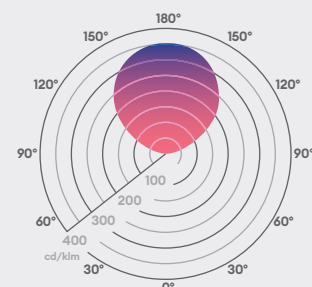
CRI 80 providing true colour appearance

Available in a new 2200K setting to create a warm and cosy environment with minimal disruption to natural habitat

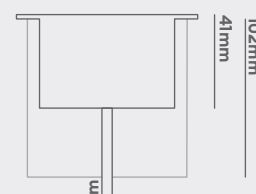
Long lifetime of 70,000hrs

Available in an array of colours

Beam angle: 100°



Ø76mm



Ground Lights

IP68

IP65 perfect for internal or external applications



Coastal protected

IK08

IK08 impact protection - walk over (Stainless Steel only)

Guarantee

7 years

Features & benefits

Supplied complete with installation tube

SDCM3 ensuring uniform light appearance and consistency

Single LED and lens combination for maximum efficiency and optimal light distribution

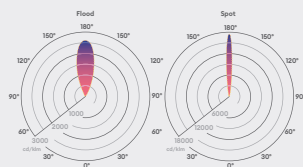
CRI 80 providing true colour appearance

Available in a new 2200K setting to create a warm and cosy environment with minimal disruption to natural habitat

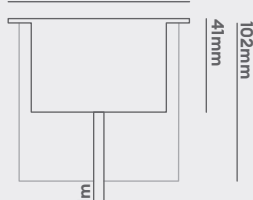
Long lifetime of 70,000hrs

Available in an array of colours

Beam angle: 30° 12°



Ø76mm



GL040 Low Glare

Modular Ground Light

Features

IK rating	IK08
IP rating	IP68
CSP switchable	Single CCT
Walk over / Drive over	Walk over (Stainless Steel & Antique Brass Only)
Input	150mA / 250mA / 350mA / 500mA / 700mA
LED lifetime	L70 70,000h
Colour rendering Index	CRI>80
Colour consistency	SDCM3

Installation information

Cut out size (mm)	70mm
Bathroom zone	1
Inrush current	N/A
Construction material	Stainless Steel
Suitable for coastal areas	Yes
Weight	GL040AB: 700g, GL040BK: TBC, GL040SS: 818g
Maximum ambient temperature	55°C
SELV	N/A
Electric class (1, 2, 3)	3
Earth leakage	N/A

Photometrics @ 25°C

Product code	Finish	CCT	Beam angle	150mA			700mA			Energy
				W	lm	lm/W	W	lm	lm/W	
GL040SSLG22F	Stainless steel 316	2200K	30°	0.8W	66	82	4.6W	264	57	100%
GL040SSLG22S	Stainless steel 316	2200K	12°	0.8W	66	82	4.6W	264	57	100%
GL040SSLG27F	Stainless steel 316	2700K	30°	0.8W	79	98	4.6W	315	68	100%
GL040SSLG27S	Stainless steel 316	2700K	12°	0.8W	79	98	4.6W	315	68	100%
GL040SSLG30F	Stainless steel 316	3000K	30°	0.8W	79	99	4.6W	318	69	100%
GL040SSLG30S	Stainless steel 316	3000K	12°	0.8W	79	99	4.6W	318	69	100%
GL040SSLG40F	Stainless steel 316	4000K	30°	0.8W	82	103	4.6W	329	71	100%
GL040SSLG40S	Stainless steel 316	4000K	12°	0.8W	82	103	4.6W	329	71	100%

In the part code to replace your colour change SS (Stainless Steel) to AB (Antique Brass) or BK (Black). **Important:** All finishes are made to order. Energy rating is a reflection of the LED light source.

Wiring information

Cable / flying lead	1m (H05RN-F) rubberised cable (outside diameter: 6mm)
Type of wiring required	Series

Recommended LED drivers

See pages 200 - 203 for complete LED driver offer

Product code	Input	SELV	Dimming	Bathroom zone	Products per driver
DRV150700 (all settings)	220-240V	Yes	No	N/A	1-6
DRV350700TD (700mA)	220-240V	Yes	Yes	N/A	2-4
PSMD70024	220-240V	Yes	Yes	N/A	1-2

Accessories

JB2 / JB4 / JB6	IP68 waterproof connectors	Sold Separately	212
WCR 275 BLACK	2-core rubber cable	Sold Separately	213



GL040 Ultra Low Glare

Modular Ground Light

Features

IK rating	IK08
IP rating	IP68
CSP switchable	Single CCT
Walk over / Drive over	Walk over (Stainless Steel & Antique Brass Only)
Input	150mA / 250mA / 350mA / 500mA
LED lifetime	L70 70,000h
Colour rendering Index	CRI>80
Colour consistency	SDCM3

Installation information

Cut out size (mm)	70mm
Bathroom zone	1
Inrush current	N/A
Construction material	Stainless Steel
Suitable for coastal areas	Yes
Weight	GL040AB: 700g, GL040BK: TBC, GL040SS: 818g
Maximum ambient temperature	55°C
SELV	N/A
Electric class (1, 2, 3)	3
Earth leakage	N/A

Photometrics @ 25°C

Product code	Finish	CCT	Beam angle	150mA			500mA			Energy
				W	lm	lm/W	W	lm	lm/W	
GL040USS22F	Stainless steel 316	2200K	40°	0.8W	77	96	3W	238	79	100%
GL040USS22S	Stainless steel 316	2200K	12°	0.8W	77	96	3W	238	79	100%
GL040USS27F	Stainless steel 316	2700K	40°	0.8W	92	115	3W	284	95	100%
GL040USS27S	Stainless steel 316	2700K	12°	0.8W	92	115	3W	284	95	100%
GL040USS30F	Stainless steel 316	3000K	40°	0.8W	93	116	3W	287	96	100%
GL040USS30S	Stainless steel 316	3000K	12°	0.8W	93	116	3W	287	96	100%
GL040USS40F	Stainless steel 316	4000K	40°	0.8W	96	120	3W	297	99	100%
GL040USS40S	Stainless steel 316	4000K	12°	0.8W	96	120	3W	297	99	100%

In the part code to replace your colour change SS (Stainless Steel) to AB (Antique Brass) or BK (Black). **Important:** BK finish is made to order. Energy rating is a reflection of the LED light source.

Wiring information

Cable / flying lead	1m (H05RN-F) rubberised cable (outside diameter: 6mm)
Type of wiring required	Series

Recommended LED drivers

See pages 200 - 203 for complete LED driver offer

Product code	Input	SELV	Dimming	Bathroom zone	Products per driver
DRV150700 (150-500mA)	220-240V	Yes	No	N/A	1-6
DRV350700TD (350-500mA)	220-240V	Yes	Yes	N/A	2-6
PSIP35018W	220-240V	Yes	No	1	5-8

Accessories

JB2 / JB4 / JB6	IP68 waterproof connectors	Sold Separately	212
WCR 275 BLACK	2-core rubber cable	Sold Separately	213

Ground Lights

IP68

IP65 perfect for internal or external applications



Coastal protected

IK08

IK08 impact protection - walk over (Stainless Steel only)

Guarantee

7 years

Features & benefits

Supplied complete with installation tube

SDCM3 ensuring uniform light appearance and consistency

Single LED and lens combination for maximum efficiency and optimal light distribution

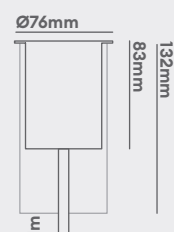
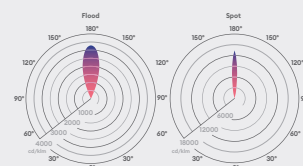
CRI 80 providing true colour appearance

Available in a new 2200K setting to create a warm and cosy environment with minimal disruption to natural habitat

Long lifetime of 70,000hrs

Available in an array of colours

Beam angle: 40° 12°



Ground Lights

IP68

IP65 perfect for internal or external applications



Coastal protected

IK08

IK08 impact protection - walk over (Stainless Steel only)

Guarantee

7 years

Features & benefits

Supplied complete with installation tube

SDCM3 ensuring uniform light appearance and consistency

Single LED and lens combination for maximum efficiency and optimal light distribution

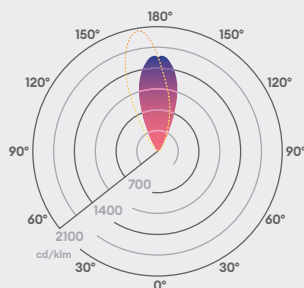
CRI 80 providing true colour appearance

Available in a new 2200K setting to create a warm and cosy environment with minimal disruption to natural habitat

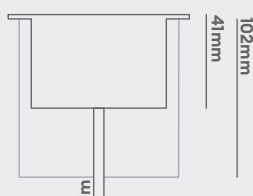
Long lifetime of 70,000hrs

Available in an array of colours

Beam angle: 40°



Ø76mm



GL040 Half Moon

Modular Ground Light

Features

IK rating	IK08
IP rating	IP68
CSP switchable	Single CCT
Walk over / Drive over	Walk over (Stainless Steel & Antique Brass Only)
Input	150mA / 250mA / 350mA / 500mA / 700mA
LED lifetime	L70 70,000h
Colour rendering Index	CRI>80
Colour consistency	SDCM3

Installation information

Cut out size (mm)	70mm
Bathroom zone	1
Inrush current	N/A
Construction material	Stainless Steel
Suitable for coastal areas	Yes
Weight	GL040AB: 600g, GL040BK: TBC, GL040SS: 720g
Maximum ambient temperature	55°C
SELV	N/A
Electric class (1, 2, 3)	3
Earth leakage	N/A

Photometrics @ 25°C

Product code	Finish	CCT	Beam angle	150mA			700mA			Energy
				W	lm	lm/W	W	lm	lm/W	
GL040SSHM22	Stainless steel 316	2200K	40°	0.8W	37	47	4.6W	149	32	1 E
GL040SSHM27	Stainless steel 316	2700K	40°	0.8W	45	56	4.6W	178	39	1 E
GL040SSHM30	Stainless steel 316	3000K	40°	0.8W	45	56	4.6W	180	39	1 E
GL040SSHM40	Stainless steel 316	4000K	40°	0.8W	47	58	4.6W	186	40	1 E

In the part code to replace your colour change SS (Stainless Steel) to AB (Antique Brass) or BK (Black). **Important:** All finishes are made to order. Energy rating is a reflection of the LED light source.

Wiring information

Cable / flying lead	1m (H05RN-F) rubberised cable (outside diameter: 6mm)
Type of wiring required	Series

Recommended LED drivers

See pages 200 - 203 for complete LED driver offer

Product code	Input	SELV	Dimming	Bathroom zone	Products per driver
DRV150700 (all settings)	220-240V	Yes	No	N/A	1-6
DRV350700TD (700mA)	220-240V	Yes	Yes	N/A	2-4
PSMD70024	220-240V	Yes	Yes	N/A	1-2

Accessories

JB2 / JB4 / JB6	IP68 waterproof connectors	Sold Separately	212
WCR 275 BLACK	2-core rubber cable	Sold Separately	213



Ground Lights

IP65

IP65 perfect for internal or external applications



Coastal protected

IK08

IK08 impact protection - walk over (Stainless Steel only)

Guarantee

7 years

Features & benefits

Supplied complete with installation tube

SDCM3 ensuring uniform light appearance and consistency

Single LED and lens combination for maximum efficiency and optimal light distribution

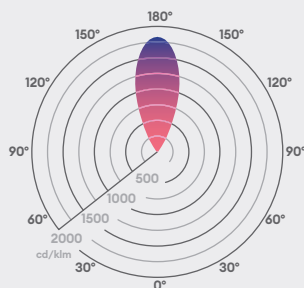
CRI 80 providing true colour appearance

Available in a new 2200K setting to create a warm and cosy environment with minimal disruption to natural habitat

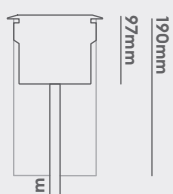
Long lifetime of 70,000hrs

Available in an array of colours

Beam angle: 40°



Ø98mm



GL038 Low Voltage

Low Voltage LED Ground light

Features

IK rating	IK08
IP rating	IP65
CSP switchable	Single CCT
Walk over / Drive over	Walk over (Stainless Steel & Antique Brass Only)
Input	150mA / 250mA / 350mA / 500mA / 700mA
LED lifetime	L70 70,000h
Colour rendering Index	CRI>80
Colour consistency	SDCM3

Installation information

Cut out size (mm)	80-85mm
Bathroom zone	2
Inrush current	N/A
Construction material	Stainless steel 316
Suitable for coastal areas	Yes
Weight	GL038AB: 754g, GL038BK: TBC, GL038SS: 696g, GL038BZ: TBC
Maximum ambient temperature	35°C
SELV	Yes
Electric class (1, 2, 3)	1
Earth leakage	N/A

Photometrics @ 25°C

Product code	Finish	CCT	Beam angle	150mA			700mA			Energy
				W	lm	lm/W	W	lm	lm/W	
GL038SS22XF	Stainless steel 316	2200K	40°	0.8W	108	135	4.6W	431	94	1 E
GL038SS27XF	Stainless steel 316	2700K	40°	0.8W	129	161	4.6W	515	112	1 E
GL038SS30XF	Stainless steel 316	3000K	40°	0.8W	130	163	4.6W	520	113	1 E
GL038SS40XF	Stainless steel 316	4000K	40°	0.8W	134	168	4.6W	538	117	1 E

In the part code to replace your colour, change SS to AB (Antique Brass), BK (Black) or BZ (Bronze). **Important:** BK & BZ finish are made to order. Energy rating is a reflection of the LED light source.

Wiring information

Cable / flying lead	1m H05RN-F rubberised cable (outside diameter: 7mm)
Type of wiring required	Parallel

Recommended LED drivers

See pages 200 - 203 for complete LED driver offer

Product code	Input	SELV	Dimming	Bathroom zone	Products per driver
DRV150700 (all settings)	220-240V	Yes	No	N/A	1-6
DRV350700TD (350 & 500mA)	220-240V	Yes	Yes	N/A	3-12
DRV350700TD (700mA)	220-240V	Yes	Yes	N/A	2-4

Accessories

JB5	Gel filled waterproof connector	Sold Separately	212
WC 5-9	Quick release waterproof joint	Sold Separately	212



GL038 Mains

Straight to mains LED Ground light

Features

IK rating	IK08
IP rating	IP65
CSP switchable	Single CCT
Walk over / Drive over	Walk over (Stainless Steel & Antique Brass Only)
Input	220-240V AC
LED lifetime	L70 70,000h
Colour rendering Index	CRI>80
Colour consistency	SDCM3

Installation information

Cut out size (mm)	80-85mm
Bathroom zone	2
Inrush current	GL038AB: 9A 0.8ms, GL038BK: TBC, GL038SS: 60A 0.037ms, GL038BZ: TBC
Construction material	Stainless steel 316
Suitable for coastal areas	Yes
Weight	GL038AB: 754g, GL038BK: TBC, GL038SS: 696g, GL038BZ: TBC
Maximum ambient temperature	35°C
SELV	Yes
Electric class (1, 2, 3)	1
Earth leakage	TBC

Photometrics @ 25°C

Product code	Finish	W	CCT	Beam angle	lm	lm/W	Energy
GL038SS22MF	Stainless steel 316	2.8W	2200K	40°	249	89	A B E
GL038SS27MF	Stainless steel 316	2.8W	2700K	40°	297	106	A B E
GL038SS30MF	Stainless steel 316	2.8W	3000K	40°	300	107	A B E
GL038SS40MF	Stainless steel 316	2.8W	4000K	40°	310	111	A B E

In the part code to replace your colour, change SS to AB (Antique Brass), BK (Black) or BZ (Bronze). **Important:** BK & BZ finish are made to order. Energy rating is a reflection of the LED light source.

Wiring information

Cable / flying lead	1m H05RN-F rubberised cable (outside diameter: 7mm)
Type of wiring required	Parallel

Accessories

JB5	Gel filled waterproof connector	Sold Separately
WC 5-9	Quick release waterproof joint	Sold Separately

Ground Lights

IP65

IP65 perfect for internal or external applications



Coastal protected

IK08

IK08 impact protection - walk over (Stainless Steel only)

Guarantee

7 years

Features & benefits

Supplied complete with installation tube

SDCM3 ensuring uniform light appearance and consistency

Single LED and lens combination for maximum efficiency and optimal light distribution

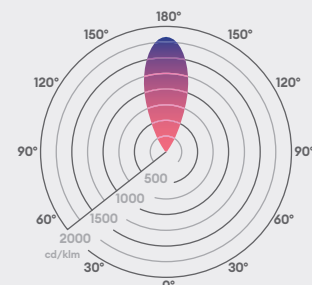
CRI 80 providing true colour appearance

Available in a new 2200K setting to create a warm and cosy environment with minimal disruption to natural habitat

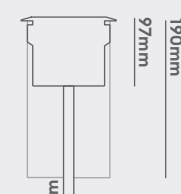
Long lifetime of 70,000hrs

Available in an array of colours

Beam angle: 40°



Ø98mm



Ground light accessories

Choose the ideal accessory for your ground light

Change the aesthetic or find the perfect way to install your ground light.

Choose the ideal accessory



Product codes

Product Code	Description	Guarantee
TUBE332	Ground light installation tube	1 year extended warranty
TUBE/50	Ground light installation tube	1 year extended warranty
TUBE/68	Ground light installation tube	1 year extended warranty

For full product specification visit collingwoodlighting.com

Compatible with

	GL200 Page 39-43	GL019 Eyelid Page 66	GL021 Page 70	GL022 Page 71
TUBE332				
TUBE/50				
TUBE/68				



Tilt Adjustable Ground Light

Straight to Mains, TRIAC mains dimmable

Features

IK rating	GLTM_11: IK08; GLTM_14: IK08; GLTM_16: IK10; GLTM_19: IK10; GLTM_22: IK10
IP rating	IP67
CSP switchable	Single CCT
Walk over / Drive over	Drive over (15mph maximum)
Input	220-240V AC
LED lifetime	L70 50,000h
Colour rendering Index	CRI>80
Colour consistency	SDCM3

Installation information

Cut out size (mm)	119/147/165/193/223
Bathroom zone	2
Inrush current	GLTM_11: 0.5A 0.4ms, GLTM_14: 0.6A 0.4ms, GLTM_16: 0.45A 0.5ms, GLTM_19: 0.55A 0.5ms, GLTM_22: 0.55A 0.5ms
Construction material	Anodised aluminium body, 316 SS bezel
Suitable for coastal areas	Yes
Weight	GLTM_11: 0.99kg, GLTM_14: 1.56kg, GLTM_16: 2.03kg, GLTM_19: 3.26kg, GLTM_22: 3.98kg
Maximum ambient temperature	-25°C - 40°C
SELV	Yes
Electric class (1, 2, 3)	1
Earth leakage	0.1mA

Photometrics @ 25°C

Product code	Type	Finish	W	CCT	Beam angle	lm	lm/W	Energy
GLTMS119T30	Ø119mm cut-out	Stainless steel 316	6W	3000K	34°	450	75	
GLTMS147T30	Ø147mm cut-out	Stainless steel 316	12W	3000K	34°	1200	100	
GLTMS165T30	Ø165mm cut-out	Stainless steel 316	18W	3000K	34°	1600	89	
GLTMS193T30	Ø193mm cut-out	Stainless steel 316	23W	3000K	34°	2300	100	
GLTMS223T30	Ø223mm cut-out	Stainless steel 316	30W	3000K	34°	3300	100	
GLTMF147T30	Ø147mm cut-out	Stainless steel 316	12W	3000K	60°	1200	100	
GLTMF165T30	Ø165mm cut-out	Stainless steel 316	18W	3000K	60°	1600	89	

Energy rating is a reflection of the LED light source.

Wiring information

Cable / flying lead	Pre-wired 1.0M H05RN-F, 3x1.0mm2
Type of wiring required	Parallel

Accessories

DM298FP	Faceplate rotary mains dimmer	Sold Separately
DM298GRID	Grid rotary mains dimmer	Sold Separately
JB5	Gel filled waterproof connector	Sold Separately

Ground Lights

IP67

IP67 for complete protection against ingress of dust & water

IK08

IK08 (GLTM_11/14) IK10 (GLTM_16/19/22)



Suitable for coastal applications

Guarantee

5 years

Features & benefits

Tilt angle of luminaire is adjustable, just turn knob to tilt the light distribution up to 25 degrees

Static loading capacity is 2000kg

Pre-wired with 1 meter of cable to aid the installer

DALI-2 dimmable and RGBW options also available

Supplied with installation tube

Beam angle: 34° 60°

