

Strip Lights



Comparing strip types

Choosing between standard, premium, COF & neon

Our extensive range of decorative and under shelf lighting has a multitude of attractive options which are suitable for any installation.

Flexible tape - Constant voltage

Options for indoor use.
Flexible tape for runs up to 5m.



Flexible tape - Current regulated

CRI 90 LED chips allow a high quality option for indoor and outdoor use.
Flexible tape for runs up to 20m.



Dotless strip

COF LED strip is ideal for creating long linear light patterns in indoor applications. In contrast to other types of LED strip, this “chip on flex” design creates a pure dotless appearance, where the individual chips are not visible. Flexible tape for runs up to 5m.



Neon strip

Neon strip provides low glare with a soft and uniform light, ideal for indoor and outdoor use. Flexible profile for bending in the wall.



Choosing LED strip

Find the ideal strip for your installation

Take into consideration the below questions when choosing your LED strip.

What effect strip do you need?

Strip type

Flexible tape

Ideal for when your strip will not be visible after installation.



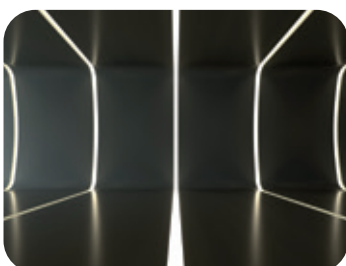
Dottless flexible tape

Ideal for when your strip may be visible after installation.



Neon bending

Ideal for creating shapes and curves in your installation.



Where are you using your LED strip?

IP rating

IP20 dry environments

For spaces such as living rooms and other living spaces.



IP44 damp environments

For indoor spaces such as kitchens, or bathrooms.



IP67 outdoor environments

For outdoor spaces such as gardens, façades, and under water.



Primary or accent lighting?

Wattage

4.8W accent lighting

Ideal for lighting under cabinets and kickboards.



9.6W atmospheric lighting

Ideal for lighting in coves to create atmosphere.



14.4W/17W primary lighting

Ideal for lighting up a room using coves or exposed beams.



Warm or cool atmosphere?

CCT

2700K warmest

For a warm and intimate feel, use 2700K.



3000K warm

For the warmth of a halogen, use 3000K.



4000K neutral white

To replicate the look of daylight, use 2700K.



What length strip do you need?

Length

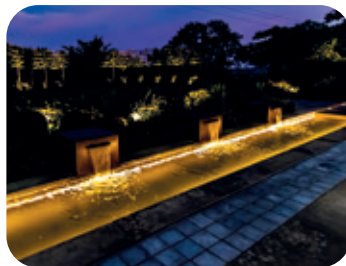
Up to 5m lengths

Constant voltage strip is ideal for lengths under 5m.



Over 5m lengths

Current regulated strip is ideal for lengths between 5m and 20m.



Will you need an accessories?

Accessories

Profile

Diffuse your light and create a stylish finish with profile.



Connectors

Connectors can be used to extend your strip and go around corners.



Drivers

The driver will depend on the wattage and length of the strip.



Choosing LED strip

Find the ideal LED strip for your installation

Use the tables below to find the ideal LED strip for your installation.

Flexible tape

(Current regulated - Up to 20m lengths)

Current regulated technology to ensure there is no loss in light output, regardless of how long the strip is or how far away the driver is.

IP rating	Wattage	Colour temperature	Length	Product code	IP rating	Wattage	Colour temperature	Length	Product code
IP20	4.8W/m	2700K	20m	LSC0227200	IP68	4.8W/m	2700K	20m	LSC8227200
			Bespoke	LSC0227... ▶				Bespoke	LSC8227... ▶
		3000K	20m	LSC0230200			3000K	20m	LSC8230200
			Bespoke	LSC0230... ▶				Bespoke	LSC8230... ▶
		4000K	20m	LSC0240200			4000K	20m	LSC8240200
			Bespoke	LSC0240... ▶				Bespoke	LSC8240... ▶
	9.6W/m	2700K	20m	LSC0527200		9.6W/m	2700K	20m	LSC8527200
			Bespoke	LSC0527... ▶				Bespoke	LSC8527... ▶
		3000K	20m	LSC0530200			3000K	20m	LSC8530200
			Bespoke	LSC0530... ▶				Bespoke	LSC8530... ▶
		4000K	20m	LSC0540200			4000K	20m	LSC8540200
			Bespoke	LSC0540... ▶				Bespoke	LSC8540... ▶
	14.4W/m	2700K	10m	LSC0427100		14.4W/m	2700K	10m	LSC8427100
			Bespoke	LSC0427... ▶				Bespoke	LSC8427... ▶
		3000K	10m	LSC0430100			3000K	10m	LSC8430100
			Bespoke	LSC0430... ▶				Bespoke	LSC8430... ▶
		4000K	10m	LSC0440100			4000K	10m	LSC8440100
			Bespoke	LSC0440... ▶				Bespoke	LSC8440... ▶
	17W/m	2700K	10m	LSC0627100		17W/m	2700K	10m	LSC8627100
			Bespoke	LSC0627... ▶				Bespoke	LSC8627... ▶
		3000K	10m	LSC0630100			3000K	10m	LSC8630100
			Bespoke	LSC0630... ▶				Bespoke	LSC8630... ▶
		4000K	10m	LSC0640100			4000K	10m	LSC8640100
			Bespoke	LSC0640... ▶				Bespoke	LSC8640... ▶

To finish your bespoke code, see bespoke lengths table.

Flexible tape

(Constant voltage - Up to 5m lengths)

Constant voltage, making it the perfect solution for shorter distances as there will be no loss of light output up to 5m.

IP rating	Wattage	Colour temperature	Length	Product code
IP20	4.8W/m	2700K	5m	LSV0227050
			50m	LSV0227500
			Bespoke	LSV0227... ▶
		3000K	5m	LSV0230050
			50m	LSV0230500
			Bespoke	LSV0230... ▶
		4000K	5m	LSV0240050
			50m	LSV0240500
			Bespoke	LSV0240... ▶
	9.6W/m	2700K	5m	LSV0527050
			50m	LSV0527500
			Bespoke	LSV0527... ▶
		3000K	5m	LSV0530050
			50m	LSV0530500
			Bespoke	LSV0530... ▶
		4000K	5m	LSV0540050
			50m	LSV0540500
			Bespoke	LSV0540... ▶
IP44	4.8W/m	2700K	5m	LSV4227050
			Bespoke	LSV4227... ▶
		3000K	5m	LSV4230050
			Bespoke	LSV4230... ▶
		4000K	5m	LSV4240050
			Bespoke	LSV4240... ▶
	9.6W/m	2700K	5m	LSV4527050
			Bespoke	LSV4527... ▶
		3000K	5m	LSV4530050
			Bespoke	LSV4530... ▶
		4000K	5m	LSV4540050
			Bespoke	LSV4540... ▶

Bespoke lengths

Add the below 3 digits to the end of your bespoke product code to get the exact length you need

Constant voltage:

Constant voltage strip is available in bespoke lengths up to 5m.

Current regulated:

Current regulated strip is available in bespoke lengths up to 20m.

Product code	Length (m)	Product code	Length (m)	Product code	Length (m)	Product code	Length (m)
001	0.1	051	5.1	101	10.1	151	15.1
002	0.2	052	5.2	102	10.2	152	15.2
003	0.3	053	5.3	103	10.3	153	15.3
004	0.4	054	5.4	104	10.4	154	15.4
005	0.5	055	5.5	105	10.5	155	15.5
006	0.6	056	5.6	106	10.6	156	15.6
007	0.7	057	5.7	107	10.7	157	15.7
008	0.8	058	5.8	108	10.8	158	15.8
009	0.9	059	5.9	109	10.9	159	15.9
010	1	060	6	110	11	160	16
011	1.1	061	6.1	111	11.1	161	16.1
012	1.2	062	6.2	112	11.2	162	16.2
013	1.3	063	6.3	113	11.3	163	16.3
014	1.4	064	6.4	114	11.4	164	16.4
015	1.5	065	6.5	115	11.5	165	16.5
016	1.6	066	6.6	116	11.6	166	16.6
017	1.7	067	6.7	117	11.7	167	16.7
018	1.8	068	6.8	118	11.8	168	16.8
019	1.9	069	6.9	119	11.9	169	16.9
020	2.0	070	7	120	12.0	170	17
021	2.1	071	7.1	121	12.1	171	17.1
022	2.2	072	7.2	122	12.2	172	17.2
023	2.3	073	7.3	123	12.3	173	17.3
024	2.4	074	7.4	124	12.4	174	17.4
025	2.5	075	7.5	125	12.5	175	17.5
026	2.6	076	7.6	126	12.6	176	17.6
027	2.7	077	7.7	127	12.7	177	17.7
028	2.8	078	7.8	128	12.8	178	17.8
029	2.9	079	7.9	129	12.9	179	17.9
030	3	080	8	130	13	180	18
031	3.1	081	8.1	131	13.1	181	18.1
032	3.2	082	8.2	132	13.2	182	18.2
033	3.3	083	8.3	133	13.3	183	18.3
034	3.4	084	8.4	134	13.4	184	18.4
035	3.5	085	8.5	135	13.5	185	18.5
036	3.6	086	8.6	136	13.6	186	18.6
037	3.7	087	8.7	137	13.7	187	18.7
038	3.8	088	8.8	138	13.8	188	18.8
039	3.9	089	8.9	139	13.9	189	18.9
040	4	090	9	140	14	190	19
041	4.1	091	9.1	141	14.1	191	19.1
042	4.2	092	9.2	142	14.2	192	19.2
043	4.3	093	9.3	143	14.3	193	19.3
044	4.4	094	9.4	144	14.4	194	19.4
045	4.5	095	9.5	145	14.5	195	19.5
046	4.6	096	9.6	146	14.6	196	19.6
047	4.7	097	9.7	147	14.7	197	19.7
048	4.8	098	9.8	148	14.8	198	19.8
049	4.9	099	9.9	149	14.9	199	19.9
050	5	100	10	150	15	200	20.0

Choosing Dotless & Neon strip

Find the ideal LED strip for your installation

Most LED strip will have visible dots of light where the chips are, but our dotless and neon strip shows a clean smooth line of light for a premium look.

Dotless (COF)

Flexible and adaptable. Ideal for various applications.

IP rating	Wattage	Colour temperature	Length	Product code
IP20	8W/m	2700K	5m	LSFA27050
		3000K	5m	LSFA30050
		4000K	5m	LSFA40050

Dotless (LSP)

Flexible and adaptable. Ideal for various applications.

IP rating	Wattage	Colour temperature	Length	Product code
IP20	14W/m	2700K	5m	LSP195027
		3000K	5m	LSP205030
		4000K	5m	LSP225040

Neon (side bending)

Ideal for flat surfaces with a curved line of light.

Bend direction	IP rating	Wattage	Colour temperature	Length	Product code
Side	IP67	6.5W/m	2700K	3m	LSNS7327030
				5m	LSNS7327050
				10m	LSNS7327100
			3000K	3m	LSNS7330030
				5m	LSNS7330050
				10m	LSNS7330100
			4000K	3m	LSNS7340030
				5m	LSNS7340050
				10m	LSNS7340100
		9.6W/m	2700K	3m	LSNS7327030
				5m	LSNS7327050
				10m	LSNS7327100
			3000K	3m	LSNS7330030
				5m	LSNS7330050
				10m	LSNS7330100
			4000K	3m	LSNS7340030
				5m	LSNS7340050
				10m	LSNS7340100

Neon (top bending)

Ideal for flat surfaces with a curved line of light.

Bend direction	IP rating	Wattage	Colour temperature	Length	Product code
Top	IP67	6.5W/m	2700K	3m	LSNT7327030
				5m	LSNT7327050
				10m	LSNT7327100
			3000K	3m	LSNT7330030
				5m	LSNT7330050
				10m	LSNT7330100
			4000K	3m	LSNT7340030
				5m	LSNT7340050
				10m	LSNT7340100
		9.6W/m	2700K	3m	LSNT7327030
				5m	LSNT7327050
				10m	LSNT7327100
			3000K	3m	LSNT7330030
				5m	LSNT7330050
				10m	LSNT7330100
			4000K	3m	LSNT7340030
				5m	LSNT7340050
				10m	LSNT7340100

Choosing LED strip profile

Find the ideal profile for your installation

Use the matrix to find the perfect profile for your LED strip

	RP7	RP28	SM7	SM28	C07	LSPLA21314	LSNS127MPC	LSNS127MAL	LSNS127PPC	LSNS127PAL	LSNS127PFL	LSNTT132MPC	LSNTT132MAL	LSNTT132PPC	LSNTT132PAL	LSNTT132PFL
Profile information																
Mount	Recessed	Recessed	Surface mount	Surface mount	Corner	Plaster-in	Surface mount	Surface mount	Surface mount	Surface mount	Surface mount	Surface mount	Surface mount	Surface mount	Surface mount	Surface mount
Type	Straight	Straight	Straight	Straight	Straight	Straight	Clip	Clip	Straight	Straight	Side bending	Clip	Clip	Straight	Straight	Top bending
Depth	7mm	28mm	7mm	28mm	7mm	10mm	19mm	28mm	19mm	28mm	12mm	15mm	19mm	15mm	19mm	14mm
Length	1m / 2m	1m / 2m	1m / 2m	1m / 2m	1m / 2m	2m	-	-	1m	1m	-	-	-	1m	1m	-
Flexible tape - Constant voltage																
LSV02	●	●	●	●	●											
LSV05	●	●	●	●	●											
LSV42	●	●	●	●	●											
LSV45	●	●	●	●	●											
SP50	●	●	●	●	●											
SP54	●	●	●	●	●											
Flexible tape - Current regulated																
LSC02	●	●	●	●	●											
LSC04	●	●	●	●	●											
LSC05	●	●	●	●	●											
LSC06	●	●	●	●	●											
LSC82		●		●												
LSC84		●		●												
LSC85		●		●												
LSC86		●		●												
Dotless																
LSFA	●	●	●	●	●											
LSP	●	●	●	●		●										
Neon strip																
LSNS73							●	●	●	●	●					
LSNS75							●	●	●	●	●					
LSNT73												●	●	●	●	●
LSNT75												●	●	●	●	●

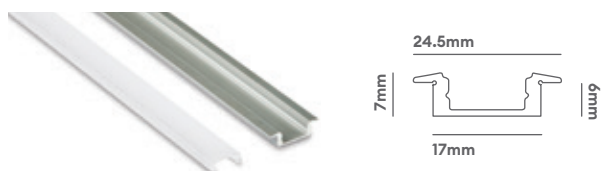
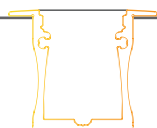
Choosing profile for LED strip

Find the ideal profile for your installation

We recommend housing your LED strip in a profile to provide a clean, flat surface and professional finish.

Recessed profile


Ideal for recessing into walled material to blend seamlessly and create flat surfaces.



RP7

7mm deep recessed anodised aluminium profile and translucent diffuser (not compatible with IP68 LED Strip)

Product code	2m: RP7020
Construction material	Anodised aluminium & plastic diffuser
Guarantee	1 year


Accessories (supplied with profile)	
RP7ECA / RP7ECB End cap	



RP28

28mm deep recessed anodised aluminium profile and translucent diffuser

Product code	1m: RP28010 2m: RP28020
Construction material	Anodised aluminium & plastic diffuser
Guarantee	1 year

Accessories (supplied with profile)	
End cap	

Surface-mount




Perfect for use in ceiling voids, shelves and under cabinets to create a clean and effective installation.

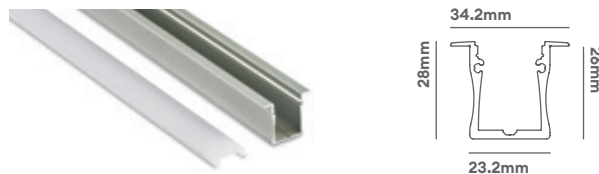


SM7

7mm slim surface-mount anodised aluminium profile and translucent diffuser (not compatible with IP68 LED Strip)

Product code	1m: SM7010 2m: SM7020
Construction material	Anodised aluminium & plastic diffuser
Guarantee	1 year

Accessories (supplied with profile)		Accessories (sold separately)
RP7ECA / RP7ECB End cap	SM7MA Mounting bracket	SM7LC Linear connector
		



SM28

28mm deep surface-mount anodised aluminium profile and translucent diffuser

Product code	1m: SM28010 2m: SM28020
Construction material	Anodised aluminium & plastic diffuser
Guarantee	1 year

Accessories (supplied with profile)	
SM28ECA End cap	SM28MB Mounting bracket
	

7mm deep profile

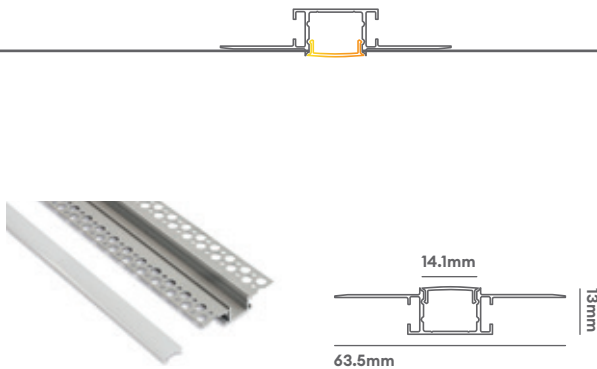
A thinner, recessed profile will fit into thinner materials. Using a slimmer, surface-mount profile allows for a more discreet output when surface mounted.

28mm deep profile

Using a deeper profile will result in a diffused light, creating a softer ambiance.

Plaster in profile

These are perfect for plastered surfaces, fix in place before the plastering has been done, leaving a seamless flat surface.



LSPLA21314

2m, 10mm deep Plaster in profile & opal diffuser for LSP strip

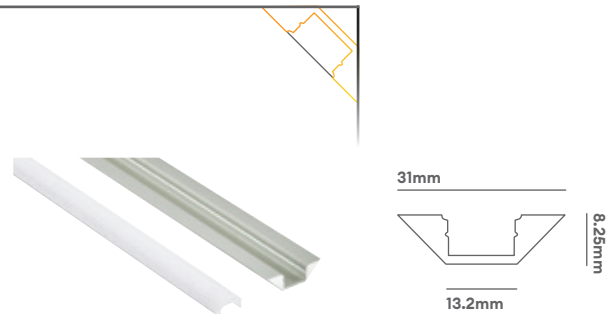
Product code	LSPLA21314
Construction material	Anodised aluminium & plastic diffuser
Guarantee	1 year

Accessories (supplied with profile)

4 x End caps

Surface-mount corner profile

Ideal for installing into a 90° corner, which is ideal for use under shelving and cabinets for a seamless installation.



CO7

45° slim surface-mount corner anodised aluminium profile and translucent diffuser (not compatible with IP68 LED Strip)

Product code	1m: CO7010 2m: CO7020
Construction material	Anodised aluminium & plastic diffuser
Guarantee	1 year

Accessories (sold separately)

CO7ECA / CO7ECB
End cap



CO7MB
Mounting bracket



LED cove packs

Cove packs are a great way to illuminate a room by reflecting light off of a ceiling.

Product code	LED COVE PACK
Construction material	Plastic
Guarantee	1 year

Accessories (supplied with profile)

LED cove clip
Fixing clip



Why choose a cove pack?

Using a cove pack helps to create a sleek and contemporary finish when directing light from LED strip on to the ceiling. Creates a striking wash of light up the wall as well as light hitting the ceiling.

This paintable, plastic coving is a complete housing for the quickest installation of an illuminated LED coving. An upper channel holds a flexible lighting strip and a lower, concealed channel directs all the cabling. Available in 1m lengths.

Profile for neon side bending strip

Find the perfect profile for your neon strip

Use a profile to mount your neon strip to a surface.

Fixed straight

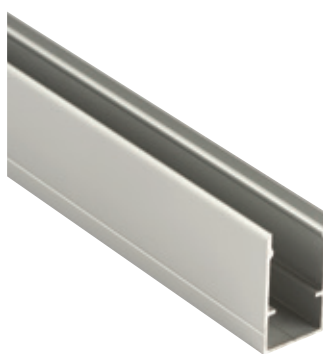
Ideal for surface mounting and creating straight lines



LSNS1217PPC

Side bending Neon strip polycarbonate profile

Product code	1m: LSNS1217PPC
Construction material	Polycarbonate
Dimensions	15 x 19 x 1000mm
Guarantee	3 year



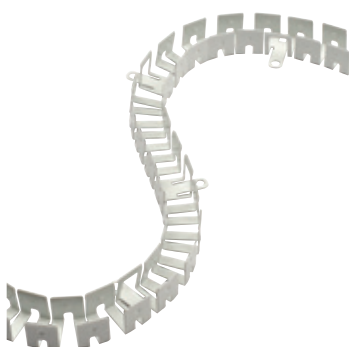
LSNS1217PAL

Side bend Neon strip aluminum profile, with cove for cable underneath the strip

Product code	1m: LSNS1217PAL
Construction material	Aluminium
Dimensions	15 x 25 x 1000mm
Guarantee	3 year

Side bending

Ideal for surface mounting and creating curved shapes



LSNS1217PFL

Side bending Neon strip flexible profile

Product code	0.5m: LSNS1217PFL
Construction material	Aluminium
Dimensions	28 x 12 x 500mm
Guarantee	3 year

Clips

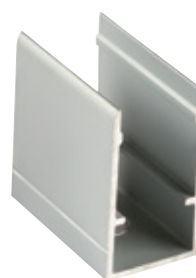
All purpose surface mounting clips



LSNS1217MPC

Side bending Neon strip polycarbonate clip
Install every 33cm

Product code	1m: LSNS1217PPC
Construction material	Polycarbonate
Dimensions	15 x 19 x 1000mm
Guarantee	3 year



LSNS1217MAL

Side bending Neon strip aluminum clip, with cove for cable underneath strip
Install every 33cm

Product code	1m: LSNS1217PPC
Construction material	Polycarbonate
Dimensions	15 x 19 x 1000mm
Guarantee	3 year

Profile for neon top bending strip

Find the perfect profile for your neon strip

Use a profile to mount your neon strip to a surface.

Fixed straight

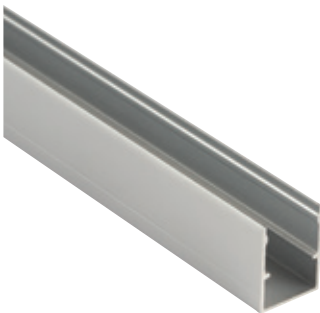
Ideal for surface mounting and creating straight lines



LSNT1312PPC

Top bending Neon strip polycarbonate profile

Product code	1m: LSNT1312PPC
Construction material	Polycarbonate
Dimensions	15 x 15 x 1000mm
Guarantee	3 years



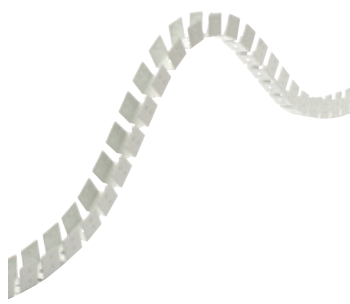
LSNT1312PAL

Top bend Neon strip aluminum profile, with cove for cable underneath the strip

Product code	1m: LSNT1312PAL
Construction material	Aluminium
Dimensions	15 x 19 x 1000mm
Guarantee	3 year

Top bending

Ideal for surface mounting and creating curved shapes



LSNT1312PFL

Top bending Neon strip flexible profile

Product code	50cm: LSNT1312PFL
Construction material	Aluminium
Dimensions	14 x 14 x 500mm
Guarantee	3 year

Clips

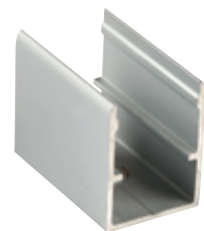
All purpose surface mounting clips



LSNT1312MPC

Top bending Neon strip polycarbonate clip
Install every 33cm

Product code	1m: LSNT1312MPC
Construction material	Polycarbonate
Dimensions	15 x 15 x 25mm
Guarantee	3 year



LSNT1312MAL

Top bending Neon strip aluminum clip, with cove for cable underneath strip
Install every 33cm

Product code	1m: LSNT1312MAL
Construction material	Aluminium
Dimensions	15 x 19 x 25mm
Guarantee	3 year

Choosing LED strip connectors

Find the ideal connectors for your strip

Use the matrix to find the perfect connectors for your LED strip

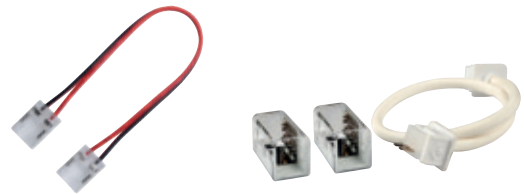
Strip to strip

Strip to strip connectors connect one end of the strip directly to another end of strip creating an almost seamless transition from one piece of strip to the next.



Strip to strip with fly-leads

Connect one piece of strip to another with the flexibility of having fly-leads between them.



	LSK2208SS	LSK2208SD	LSK2208FB	LSK2208LB	LSK2210SS	LSK2210SD	LSK2210FB	LSK2210LB	LSAFC122	LSAFC5122	LSAFD82	LSAFD82 with LSAD82F
Connector information												
Type	Strip to strip	Strip to driver	Flex bend	L bend	Strip to strip	Strip to driver	Flex bend	L bend	Strip to strip	150mm fly-lead	Strip to strip	Strip to strip 150mm fly-lead
Flexible tape - Constant voltage												
LSV02	●	●	●	●								
LSV05	●	●	●	●								
LSV42												
LSV45												
Flexible tape - Current regulated												
LSC02					●	●	●	●				
LSC04									●	●		
LSC05									●	●		
LSC06									●	●		
LSC82												
LSC84												
LSC85												
LSC86												
Dotless												
LSFA											●	●
LSP					●	●	●	●				
Neon strip												
LSNS73												
LSNS75												
LSNT73												
LSNT75												



Fly-leads

Use a connector that adds fly-leads to your strip to connect your strip to a power supply.



End cap

This is needed at the end of neon strip to complete the circuit.



L bend

Perfect for connecting strip directly to strip on a corner.



LSNS1217B2P

LSNS1217E2P

LSNS1217L2P

LSNS1217R2P

LSNS1217SSF

LSNS1217SS

LSNS1217EC

LSNT1312B2P

LSNT1312E2P

LSNT1312L2P

LSNT1312R2P

LSNT1312SSF

LSNT1312SS

LSNT1312EC

150mm
fly-lead
at bottom

150mm
fly-lead
at end

150mm
fly-lead
at left

150mm
fly-lead
at right

Strip to
strip
150mm
fly-lead

Strip to
strip

End cap

150mm
fly-lead
at bottom

150mm
fly-lead
at end

150mm
fly-lead
at left

150mm
fly-lead
at right

Strip to
strip
150mm
fly-lead

Strip to
strip

End cap



•

•

•

•

•

•

•

•

•

•

•

•

•

•

•

•

•

•

•

•

•

•

•

•

•

•

•

•

•

•

•

•

•

•

•

•

•

•

•

•

•

•

Choosing drivers for LED strip

Find the ideal driver for your strip

Use the matrix to find the perfect driver for your LED strip

	PS1524	PS3024B	PSMD3024	LSD6024
Driver information				
Constant current or Constant voltage	CV	CV	CV	CV
Output classification	24V	24V	24V	24V
IP rating	IP20	IP20	IP20	IP20
Dimmable	1-10V*	1-10V*	Mains	1-10V*
DIN rail mount	No	No	No	No
Plug & Play	No	No	No	No
*Requires a PDCINT1-10V interface to make it 1 - 10V dimmable				
Flexible tape - Constant voltage				
LSV02	3.1m	6.2m	3.8-6.2m	12.5m
LSV05	1.5m	3.1m	1.9-3.1m	6.2m
LSV42	3.1m	6.2m	3.8-6.2m	12.5m
LSV45	1.5m	3.1m	1.9-3.1m	6.2m
Flexible tape - Current regulated				
LSC02	3.1m	6.2m	3.8-6.2m	12.5m
LSC04	1m	2m	1.3-2m	4.1m
LSC05	1.5m	3.1m	1.9-3.1m	6.2m
LSC06	0.8m	1.7m	1.1-1.7m	3.5m
LSC82	3.1m	6.2m	3.8-6.2m	12.5m
LSC84	1m	2m	1.3-2m	4.1m
LSC85	1.5m	3.1m	1.9-3.1m	6.2m
LSC86	0.8m	1.7m	1.1-1.7m	3.5m
Dotless				
LSFA	1.8m	3.7m	2.3-3.7m	7.5m
LSP	1m	2.1m	1.3-2.1m	4.2m
Neon strip				
LSNS73	2.3m	4.6m	2.8-4.6m	9.2m
LSNS75	1.5m	3.1m	1.9-3.1m	6.2m
LSNT73	2.3m	4.6m	2.8-4.6m	9.2m
LSNT75	1.5m	3.1m	1.9-3.1m	6.2m

PSDIP6024	PS7524	PSDIP10024	PSMDIP10024	LSD12024	PSIP15024	PSDAL20024	PSIP25024
CV	CV	CV	CV	CV	CV	CV	CV
24V	24V	24V	24V	24V	24V	24V	24V
IP66	IP20	IP66	IP66	IP20	IP67	IP66	IP67
1-10V	No	1-10V*	Mains	1-10V*	1-10V*	DALI	1-10V*
No	No	No	No	No	No	No	No
No	No	No	No	No	No	No	No
12.5m	15.6m	20.8m	20.8m	25m	31.2m	41.6m	52m
6.2m	7.8m	10.4m	10.4m	12.5m	15.6m	20.8m	26m
12.5m	15.6m	20.8m	20.8m	25m	31.2m	41.6m	52m
6.2m	7.8m	10.4m	10.4m	12.5m	15.6m	20.8m	26m
12.5m	15.6m	20.8m	20.8m	25m	31.2m	41.6m	52m
4.1m	5.2m	6.9m	6.9m	8.3m	10.4m	13.8m	17.3m
6.2m	7.8m	10.4m	10.4m	12.5m	15.6m	20.8m	26m
3.5m	4.4m	5.8m	5.8m	7m	8.8m	11.7m	14.7m
12.5m	15.6m	20.8m	20.8m	25m	31.2m	41.6m	52m
4.1m	5.2m	6.9m	6.9m	8.3m	10.4m	13.8m	17.3m
6.2m	7.8m	10.4m	10.4m	12.5m	15.6m	20.8m	26m
3.5m	4.4m	5.8m	5.8m	7m	8.8m	11.7m	14.7m
7.5m	9.3m	12.5m	12.5m	15m	18.7m	25m	31.2m
4.2m	5.3m	7.1m	7.1m	8.5m	10.7m	14.2m	17.8m
9.2m	11.5m	15.3m	15.3m	18.4m	23m	30.7m	38.4m
6.2m	7.8m	10.4m	10.4m	12.5m	15.6m	20.8m	26m
9.2m	11.5m	15.3m	15.3m	18.4m	23m	30.7m	38.4m
6.2m	7.8m	10.4m	10.4m	12.5m	15.6m	20.8m	26m





LSV02

Constant voltage, self-adhesive, flexible IP20 strip

Features

Strip type	Flexible tape
IP rating	IP20
CSP switchable	Single CCT
Bespoke lengths	Yes
Self-adhesive backing	Yes
Dimmable option	Driver dependent
LED/m	60
Input	24V DC
LED lifetime	L70 30,000h
Colour rendering Index	CRI>80
Colour consistency	SDCM5

Installation information

Bathroom zone	2
Construction material	Flexible tape
Maximum running length	5 m
Weight	15g per meter
Maximum ambient temperature	-20°C - 45°C
Electric class (1, 2, 3)	3

Photometrics @ 25°C

Product code	Reel length	W	CCT	Beam angle	lm	lm/W	Energy
LSV0227050	5 m	4.8W/m	2700K	120°	450	94	A F
LSV0227500	50 m	4.8W/m	2700K	120°	450	94	A F
LSV0230050	5 m	4.8W/m	3000K	120°	460	96	A F
LSV0230500	50 m	4.8W/m	3000K	120°	460	96	A F
LSV0240050	5 m	4.8W/m	4000K	120°	520	108	A F
LSV0240500	50 m	4.8W/m	4000K	120°	520	108	A F

Energy rating is a reflection of the LED light source.

Wiring information

Cable / flying lead	Supplied with 500mm, 0.5mm ² flying lead from one end
Type of wiring required	Parallel

Recommended LED drivers

Product code	Input	SELV	Dimming	Bathroom zone	Products per driver
PS3024B	220-240V	Yes	Yes (with PDCINT1-10V)	Outside zones	6m Max
PS7524	220-240V	Yes	Yes (with PDCINT1-10V)	Outside zones	15m Max
PSIP15024	220-240V	Yes	Yes (with PDCINT1-10V)	Outside zones	31m Max

Accessories

LSK2208SS / LSK2208SD / LSK2208FB / LSK2208LB	Range of fast fix connectors for use with LSV02	Sold Separately	126
LED STRIP PROFILE RANGE	Profile range to house adhesive strip	Sold Separately	121
PDCINT1-10V	1-10V dimming interface for use with 24V LED drivers	Sold Separately	314

Strip Lights

4.8W/m

Ideal for accent lighting with 4.8W/m

IP20

Ideal for living room and hallways with IP20 rating

BESPOKE

Bespoke lengths available

Guarantee

3 years

Features & benefits

Excellent for accent lighting

Cut points every 100mm

Quick and easy installation with 3M self-adhesive backing

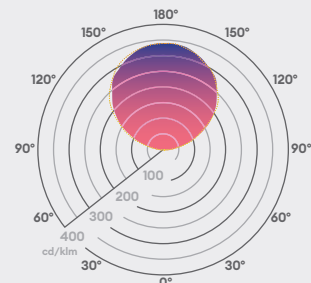
High efficacy of 108lm/W

Enlarged connection points for ease of installation

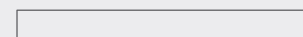
A cost-effective 50m reel box

Can be concealed in a whole range of situations offering a sleek solution to lighting features

Beam angle: 120°



5m/100mm



8mm

Strip Lights

9.6W/m

Ideal for atmospheric lighting with 9.6W/m

IP20

Ideal for living room and hallways with IP20 rating

BESPOKE

Bespoke lengths available

Guarantee

3 years

Features & benefits

Excellent for accent lighting

Cut points every 50mm

Quick and easy installation with 3M self-adhesive backing

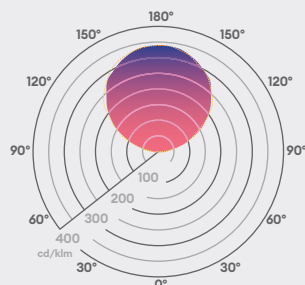
High efficacy of 108lm/W

Enlarged connection points for ease of installation

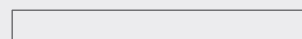
A cost-effective 50m reel box

Can be concealed in a whole range of situations offering a sleek solution to lighting features

Beam angle: 120°



5m/50mm



8mm



LSV05

Constant voltage, self-adhesive, flexible IP20 strip

Features

Strip type	Flexible tape
IP rating	IP20
CSP switchable	Single CCT
Bespoke lengths	Yes
Self-adhesive backing	Yes
Dimmable option	Driver dependent
LED/m	120
Input	24V DC
LED lifetime	L70 30,000h
Colour rendering Index	CRI>80
Colour consistency	SDCM5

Installation information

Bathroom zone	2
Construction material	Flexible tape
Maximum running length	5 m
Weight	16g per meter
Maximum ambient temperature	-20°C - 45°C
Electric class (1, 2, 3)	3

Photometrics @ 25°C

Product code	Reel length	W	CCT	∠	lm	lm/W	Energy
LSV0527050	5 m	9.6W/m	2700K	120°	900	94	
LSV0527500	50 m	9.6W/m	2700K	120°	900	94	
LSV0530050	5 m	9.6W/m	3000K	120°	930	97	
LSV0530500	50 m	9.6W/m	3000K	120°	930	97	
LSV0540050	5 m	9.6W/m	4000K	120°	1040	108	
LSV0540500	50 m	9.6W/m	4000K	120°	1040	108	

Energy rating is a reflection of the LED light source.

Wiring information

Cable / flying lead	Supplied with 500mm, 0.5mm² flying lead from one end
Type of wiring required	Parallel

Recommended LED drivers

Product code	Input	SELV	Dimming	Bathroom zone	Products per driver
LSD6024	220-240V	Yes	Yes (with PDCINT 1-10V)	Outside zones	6m Max
LSD12024	220-240V	Yes	Yes (with PDCINT 1-10V)	Outside zones	12m Max
PSIP25024	220-240V	Yes	Yes (with PDCINT 1-10V)	Outside zones	26m Max

Accessories

LSK2208SS / LSK2208SD / LSK2208FB / LSK2208LB	Range of fast fix connectors for use with LSV05	Sold Separately	126
LED STRIP PROFILE RANGE	Profile range to house adhesive strip	Sold Separately	121
PDCINT1-10V	1-10V dimming interface for use with 24V LED drivers	Sold Separately	314



Strip Lights

4.8W/m

Ideal for accent lighting with 4.8W/m

IP44

Ideal for kitchen and bathroom with IP44 rating

BESPOKE

Bespoke lengths available

Guarantee

3 years

Features & benefits

Excellent for accent lighting

Cut points every 100mm

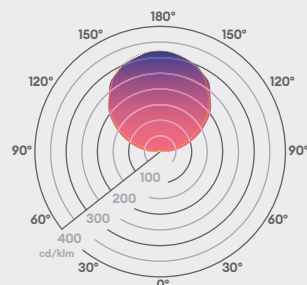
Quick and easy installation with 3M self-adhesive backing

High efficacy of 100lm/W

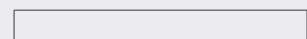
Enlarged connection points for ease of installation

Has a UV resistant, silicone coating to enable cleaning

Beam angle: 120°



5m/100mm



8mm



LSV42

Constant voltage, self-adhesive, flexible IP44 strip

Features

Strip type	Flexible tape
IP rating	IP44
CSP switchable	Single CCT
Bespoke lengths	Yes
Self-adhesive backing	Yes
Dimmable option	Driver dependent
LED/m	120
Input	24V DC
LED lifetime	L70 30,000h
Colour rendering Index	CRI>80
Colour consistency	SDCM5

Installation information

Bathroom zone	1
Construction material	Flexible tape with Silicone coating
Maximum running length	5 m
Weight	30g per meter
Maximum ambient temperature	-20°C - 45°C
Electric class (1, 2, 3)	3

Photometrics @ 25°C

Product code	Reel length	W	CCT	△	lm	lm/W	Energy
LSV4227050	5 m	4.8W/m	2700K	120°	410	86	
LSV4230050	5 m	4.8W/m	3000K	120°	425	89	
LSV4240050	5 m	4.8W/m	4000K	120°	480	100	

Energy rating is a reflection of the LED light source.

Wiring information

Cable / flying lead	Supplied with 500mm, 0.5mm ² flying lead from one end
Type of wiring required	Parallel

Recommended LED drivers

Product code	Input	SELV	Dimming	Bathroom zone	Products per driver
PS3024B	220-240V	Yes	Yes (with PDCINT 1-10V)	1 (If no water jets)	6m Max
PS7524	220-240V	Yes	Yes (with PDCINT 1-10V)	1 (If no water jets)	15m Max
PSIP15024	220-240V	Yes	Yes (with PDCINT 1-10V)	1 (If no water jets)	31m Max

Accessories

LED STRIP PROFILE RANGE	Profile range to house adhesive strip	Sold Separately	121
PDCINT1-10V	1-10V dimming interface for use with 24V LED drivers	Sold Separately	314



LSV45

Constant voltage, self-adhesive, flexible IP44 strip

Features

Strip type	Flexible tape
IP rating	IP44
CSP switchable	Single CCT
Bespoke lengths	Yes
Self-adhesive backing	Yes
Dimmable option	Driver dependent
LED/m	120
Input	24V DC
LED lifetime	L70 30,000h
Colour rendering Index	CRI>80
Colour consistency	SDCM5

Installation information

Bathroom zone	1
Construction material	Flexible tape with Silicone coating
Maximum running length	5 m
Weight	32g per meter
Maximum ambient temperature	-20°C - 45°C
Electric class (1, 2, 3)	3

Photometrics @ 25°C

Product code	Reel length	W	CCT	∠	lm	lm/W	Energy
LSV4527050	5 m	9.6W/m	2700K	120°	830	87	
LSV4530050	5 m	9.6W/m	3000K	120°	860	90	
LSV4540050	5 m	9.6W/m	4000K	120°	950	99	

Energy rating is a reflection of the LED light source.

Wiring information

Cable / flying lead	Supplied with 500mm, 0.5mm ² flying lead from one end
Type of wiring required	Parallel

Recommended LED drivers

Product code	Input	SELV	Dimming	Bathroom zone	Products per driver
LSD6024	220-240V	Yes	Yes (with PDCINT 1-10V)	1 (If no water jets)	6m Max
LSD12024	220-240V	Yes	Yes (with PDCINT 1-10V)	1 (If no water jets)	12m Max
PSIP25024	220-240V	Yes	Yes (with PDCINT 1-10V)	1 (If no water jets)	26m Max

Accessories

LED STRIP PROFILE RANGE	Profile range to house adhesive strip	Sold Separately	121
PDCINT1-10V	1-10V dimming interface for use with 24V LED drivers	Sold Separately	314

Strip Lights

- 9.6W/m** Ideal for atmospheric light with 9.6W/m
- IP44** Ideal for kitchen and bathroom with IP44 rating
- BESPOKE** Bespoke lengths available

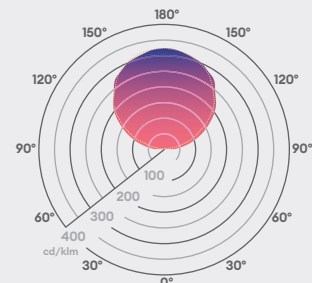
Guarantee

3 years

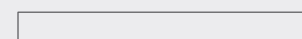
Features & benefits

- Excellent for accent lighting
- Cut points every 50mm
- Quick and easy installation with 3M self-adhesive backing
- High efficacy of 99lm/W
- Enlarged connection points for ease of installation
- Has a UV resistant, silicone coating to enable cleaning

Beam angle: 120°



5m/50mm



8mm





LSC02

4.8 W/m, IP20, 24V current regulated, high CRI, self-adhesive, flexible strip

Features

Strip type	Flexible tape
IP rating	IP20
CSP switchable	Single CCT
Bespoke lengths	Yes
Self-adhesive backing	Yes
Dimmable option	Driver dependent
LED/m	60
Input	24V DC
LED lifetime	L70 60,000h
Colour rendering Index	CRI>90
Colour consistency	SDCM3

Installation information

Bathroom zone	N/A
Construction material	Flexible tape
Maximum running length	20 m
Weight	28g per meter
Maximum ambient temperature	-20°C - 45°C
Electric class (1, 2, 3)	3

Photometrics @ 25°C

Product code	Reel length	W	CCT	Beam angle	lm	lm/W	Energy
LSC0227200	20 m	4.8W/m	2700K	120°	420	88	
LSC0230200	20 m	4.8W/m	3000K	120°	440	92	
LSC0240200	20 m	4.8W/m	4000K	120°	490	102	

Energy rating is a reflection of the LED light source.

Wiring information

Cable / flying lead	Supplied with 500mm, 0.5mm ² flying lead from one end
Type of wiring required	Parallel

Recommended LED drivers

Product code	Input	SELV	Dimming	Bathroom zone	Products per driver
PS3024B	220-240V	Yes	Yes (with PDCINT 1-10V)	Outside zones	6m Max
PS7524	220-240V	Yes	Yes (with PDCINT 1-10V)	Outside zones	15m Max
PSIP15024	220-240V	Yes	Yes (with PDCINT 1-10V)	Outside zones	31m Max

Accessories

LSK2210SS / LSK2210SD / LSK2210FB / LSK2210LB	Range of fast fix connectors for use with LSC02	Sold Separately	126
LED STRIP PROFILE RANGE	Profile range to house adhesive strip	Sold Separately	121
PDCINT1-10V	1-10V, Push, DALI dimming interface for use with 24V LED drivers	Sold Separately	314

Strip Lights



Ideal for accent lighting with 4.8W/m



Ideal for living room and hallways with IP20 rating



Bespoke lengths available

Guarantee

5 years Cutting to required length will render this product non-returnable

Features & benefits

Cut points are every 100mm

500mm flying leads attached

Has high quality LED strip using current regulation without experiencing any light drop off

Long lengths (up to 20m) suffer no light loss

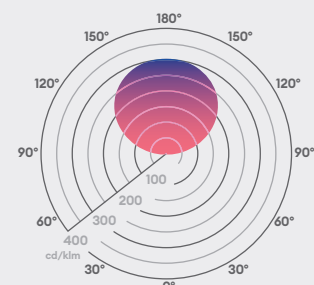
A foil backed flexible PCB, which dissipates heat (improves LED life and colour stability)

Quick and easy installation with 3M self-adhesive backing

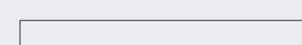
High efficacy of 102lm/W

CRI 90 providing true colour appearance

Beam angle: 120°



20m/100mm



10mm

Strip Lights

9.6W

Ideal for atmospheric light with 9.6W/m

IP20

Ideal for living room and hallways with IP20 rating

BESPOKE

Bespoke lengths available

Guarantee

5 years Cutting to required length will render this product non-returnable

Features & benefits

Cut points are every 50mm

500mm flying leads attached

Has high quality LED strip using current regulation without experiencing any light drop off

Long lengths (up to 20m) suffer no light loss

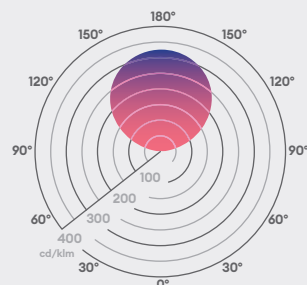
A foil backed flexible PCB, which dissipates heat (improves LED life and colour stability)

Quick and easy installation with 3M self-adhesive backing

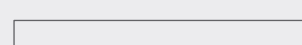
High efficacy of 99lm/W

CRI 90 providing true colour appearance

Beam angle: 120°



20m/50mm



12mm



LSC05

9.6 W/m, IP20, 24V current regulated, high CRI, self-adhesive, flexible strip

Features

Strip type	Flexible tape
IP rating	IP20
CSP switchable	Single CCT
Bespoke lengths	Yes
Self-adhesive backing	Yes
Dimmable option	Driver dependent
LED/m	120
Input	24V DC
LED lifetime	L70 60,000h
Colour rendering Index	CRI>90
Colour consistency	SDCM3

Installation information

Bathroom zone	N/A
Construction material	Flexible tape
Maximum running length	20 m
Weight	28g per meter
Maximum ambient temperature	-20°C - 45°C
Electric class (1, 2, 3)	3

Photometrics @ 25°C

Product code	Reel length	W	CCT	△	lm	lm/W	Energy
LSC0527200	20 m	9.6W/m	2700K	120°	860	90	
LSC0530200	20 m	9.6W/m	3000K	120°	900	94	
LSC0540200	20 m	9.6W/m	4000K	120°	950	99	

Energy rating is a reflection of the LED light source.

Wiring information

Cable / flying lead	Supplied with 500mm, 0.5mm ² flying lead from one end
Type of wiring required	Parallel

Recommended LED drivers

Product code	Input	SELV	Dimming	Bathroom zone	Products per driver
LSD6024	220-240V	Yes	Yes (with PDCINT 1-10V)	Outside zones	6m Max
LSD12024	220-240V	Yes	Yes (with PDCINT 1-10V)	Outside zones	12m Max
PSIP25024	220-240V	Yes	Yes (with PDCINT 1-10V)	Outside zones	26m Max

Accessories

LSAFC122 / LSAFCS122	Range of fast fix connectors for use with LSC04/05/06	Sold Separately	126
LED STRIP PROFILE RANGE	Profile range to house adhesive strip	Sold Separately	121
PDCINT1-10V	1-10V, Push, DALI dimming interface for use with 24V LED drivers	Sold Separately	314



LSC04

14.4 W/m, IP20, 24V current regulated, high CRI, self-adhesive, flexible strip

Features

Strip type	Flexible tape
IP rating	IP20
CSP switchable	Single CCT
Bespoke lengths	Yes
Self-adhesive backing	Yes
Dimmable option	Driver dependent
LED/m	120
Input	24V DC
LED lifetime	L70 60,000h
Colour rendering Index	CRI>90
Colour consistency	SDCM3

Installation information

Bathroom zone	N/A
Construction material	Flexible tape
Maximum running length	20 m
Weight	28g per meter
Maximum ambient temperature	-20°C - 40°C
Electric class (1, 2, 3)	3

Photometrics @ 25°C

Product code	Reel length	W	CCT	Beam angle	lm	lm/W	Energy
LSC0427100	10 m	14.4W/m	2700K	120°	1200	83	
LSC0430100	10 m	14.4W/m	3000K	120°	1280	89	
LSC0440100	10 m	14.4W/m	4000K	120°	1350	94	

Energy rating is a reflection of the LED light source.

Wiring information

Cable / flying lead	Supplied with 500mm, 0.5mm ² flying lead from one end
Type of wiring required	Parallel

Recommended LED drivers

Product code	Input	SELV	Dimming	Bathroom zone	Products per driver
LSD6024	220-240V	Yes	Yes (with PDCINT 1-10V)	Outside zones	4m Max
LSD12024	220-240V	Yes	Yes (with PDCINT 1-10V)	Outside zones	8m Max
PSIP25024	220-240V	Yes	Yes (with PDCINT 1-10V)	Outside zones	17m Max

Accessories

LSAFC122 / LSAFCS122	Range of fast fix connectors for use with LSC04/05/06	Sold Separately	126
LED STRIP PROFILE RANGE	Profile range to house adhesive strip	Sold Separately	121
PDCINT1-10V	1-10V, Push, DALI dimming interface for use with 24V LED drivers	Sold Separately	314

Strip Lights

- 14.4W** Ideal for primary light with 14.4W/m
- IP20** Ideal for living room and hallways with IP20 rating
- BESPOKE** Bespoke lengths available

Guarantee

5 years Cutting to required length will render this product non-returnable

Features & benefits

Cut points are every 50mm

500mm flying leads attached

Has high quality LED strip using current regulation without experiencing any light drop off

Long lengths (up to 10m) suffer no light loss

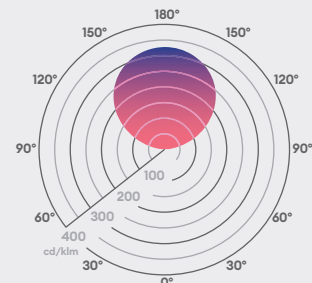
A foil backed flexible PCB, which dissipates heat (improves LED life and colour stability)

Quick and easy installation with 3M self-adhesive backing

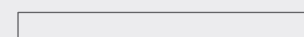
High efficacy of 94lm/W

CRI 90 providing true colour appearance

Beam angle: 120°



10m/50mm



12mm

Strip Lights

- 17W

Ideal for primary light with 17W/m
- IP20

Ideal for living room and hallways with IP20 rating
- BESPOKE

Bespoke lengths available

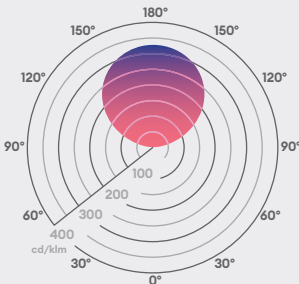
Guarantee

5 years Cutting to required length will render this product non-returnable

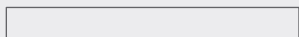
Features & benefits

- Cut points are every 41.6mm
- 500mm flying leads attached
- Has high quality LED strip using current regulation without experiencing any light drop off
- Long lengths (up to 10m) suffer no light loss
- A foil backed flexible PCB, which dissipates heat (improves LED life and colour stability)
- Quick and easy installation with 3M self-adhesive backing
- High efficacy of 94lm/W
- CRI 90 providing true colour appearance

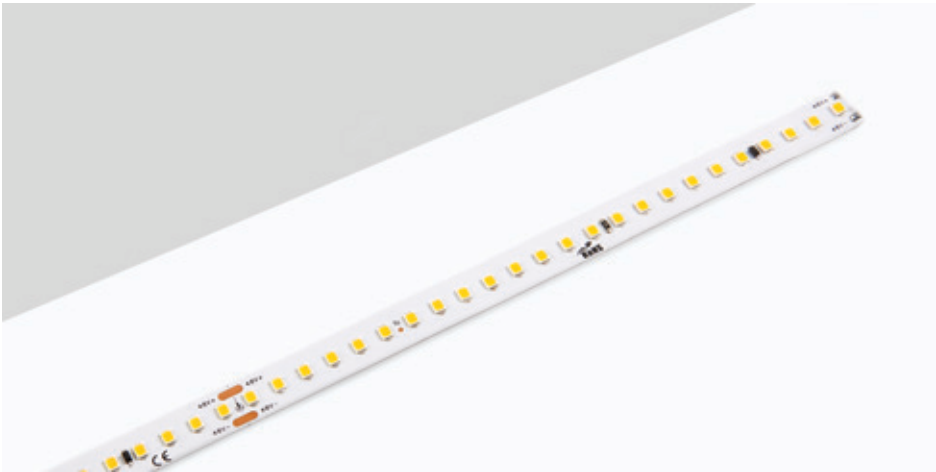
Beam angle: 120°



10m/41.6mm



12mm



LSC06

17.0 W/m, IP20, 24V current regulated, high CRI, self-adhesive, flexible strip

Features

Strip type	Flexible tape
IP rating	IP20
CSP switchable	Single CCT
Bespoke lengths	Yes
Self-adhesive backing	Yes
Dimmable option	Driver dependent
LED/m	120
Input	24V DC
LED lifetime	L70 60,000h
Colour rendering Index	CRI>90
Colour consistency	SDCM3

Installation information

Bathroom zone	N/A
Construction material	Flexible tape
Maximum running length	20 m
Weight	30g per meter
Maximum ambient temperature	-20°C - 40°C
Electric class (1, 2, 3)	3

Photometrics @ 25°C

Product code	Reel length	W	CCT	∠	lm	lm/W	Energy
LSC0627100	10 m	17.0W/m	2700K	120°	1400	82	
LSC0630100	10 m	17.0W/m	3000K	120°	1450	85	
LSC0640100	10 m	17.0W/m	4000K	120°	1600	94	

Energy rating is a reflection of the LED light source.

Wiring information

Cable / flying lead	Supplied with 500mm, 0.5mm² flying lead from one end
Type of wiring required	Parallel

Recommended LED drivers

Product code	Input	SELV	Dimming	Bathroom zone	Products per driver
PS7524	220-240V	Yes	Yes (with PDCINT 1-10V)	Outside zones	3m Max
PSIP15024	220-240V	Yes	Yes (with PDCINT 1-10V)	Outside zones	8m Max
PSIP25024	220-240V	Yes	Yes (with PDCINT 1-10V)	Outside zones	14m Max

Accessories

LSAFC122 / LSAFCS122	Range of fast fix connectors for use with LSC04/05/06	Sold Separately	126
LED STRIP PROFILE RANGE	Profile range to house adhesive strip	Sold Separately	121
PDCINT1-10V	1-10V, Push, DALI dimming interface for use with 24V LED drivers	Sold Separately	314



LSC82

4.8 W/m, IP68, 24V current regulated, high CRI, self-adhesive, waterproof flexible strip

Features

Strip type	Flexible tape
IP rating	IP68
CSP switchable	Single CCT
Bespoke lengths	Yes
Self-adhesive backing	Yes
Dimmable option	Driver dependent
LED/m	60
Input	24V DC
LED lifetime	L70 60,000h
Colour rendering Index	CRI>90
Colour consistency	SDCM3

Installation information

Bathroom zone	0
Construction material	Flexible tape with Silicone coating
Maximum running length	20 m
Weight	110g per meter
Maximum ambient temperature	-20°C - 45°C
Electric class (1, 2, 3)	3

Photometrics @ 25°C

Product code	Reel length	W	CCT	∠	lm	lm/W	Energy
LSC8227200	20 m	4.8W/m	2700K	120°	360	75	
LSC8230200	20 m	4.8W/m	3000K	120°	380	79	
LSC8240200	20 m	4.8W/m	4000K	120°	420	88	

Energy rating is a reflection of the LED light source.

Wiring information

Cable / flying lead	Supplied with 500mm, 0.5mm² flying lead from one end
Type of wiring required	Parallel

Recommended LED drivers

Product code	Input	SELV	Dimming	Bathroom zone	Products per driver
PSMDIP10024	220-240V	Yes	Yes (with PDCINT1-10V)	N/A	6m Max
PS7524	220-240V	Yes	Yes (with PDCINT1-10V)	0 (l when dimming)	15m Max
PSIP15024	220-240V	Yes	Yes (with PDCINT1-10V)	0 (l when dimming)	31m Max

Accessories

LED STRIP PROFILE RANGE	Profile range to house adhesive strip	Sold Separately	121
PDCINT1-10V	1-10V, Push, DALI dimming interface for use with 24V LED drivers	Sold Separately	314

Strip Lights



Ideal for accent lighting with 4.8W/m



Ideal for wet environments with IP68



Bespoke lengths available

Guarantee

5 years Cutting to required length will render this product non-returnable

Features & benefits

1, 2, 3, 4 or 5m flying leads available at bespoke request

Has high quality LED strip using current regulation without experiencing any light drop off

Long lengths (up to 20m) suffer no light loss

Cut points are every 100mm

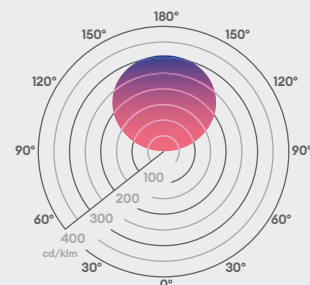
Quick and easy installation with 3M self-adhesive backing

High efficacy of 88lm/W

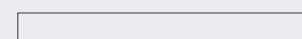
High-grade silicone extruded coating, UV resistant

CRI 90 providing true colour appearance

Beam angle: 120°



20m/100mm



12x5mm





LSC85

9.6 W/m, IP68, 24V current regulated, high CRI, self-adhesive, waterproof flexible strip

Features

Strip type	Flexible tape
IP rating	IP68
CSP switchable	Single CCT
Bespoke lengths	Yes
Self-adhesive backing	Yes
Dimmable option	Driver dependent
LED/m	120
Input	24V DC
LED lifetime	L70 60,000h
Colour rendering Index	CRI>90
Colour consistency	SDCM3

Installation information

Bathroom zone	0
Construction material	Flexible tape with Silicone coating
Maximum running length	20 m
Weight	147g per meter
Maximum ambient temperature	-20°C - 45°C
Electric class (1, 2, 3)	3

Photometrics @ 25°C

Product code	Reel length	W	CCT	Beam angle	lm	lm/W	Energy
LSC8527400	40 m	9.6W/m	2700K	120°	760	79	
LSC8530400	40 m	9.6W/m	3000K	120°	800	83	
LSC8540400	40 m	9.6W/m	4000K	120°	850	89	

Energy rating is a reflection of the LED light source.

Wiring information

Cable / flying lead	Supplied with 500mm, 0.5mm² flying lead from one end
Type of wiring required	Parallel

Recommended LED drivers

Product code	Input	SELV	Dimming	Bathroom zone	Products per driver
LSD6024	220-240V	Yes	Yes (with PDCINT 1-10V)	0 (l when dimming)	6m Max
LSD12024	220-240V	Yes	Yes (with PDCINT 1-10V)	0 (l when dimming)	12m Max
PSIP25024	220-240V	Yes	Yes (with PDCINT 1-10V)	0 (l when dimming)	26m Max

Accessories

LED STRIP PROFILE RANGE	Profile range to house adhesive strip	Sold Separately	121
PDCINT1-10V	1-10V, Push, DALI dimming interface for use with 24V LED drivers	Sold Separately	314

Strip Lights

9.6W

Ideal for atmospheric light with 9.6W/m

IP68

Ideal for wet environments with IP68

BESPOKE

Bespoke lengths available

Guarantee

5 years Cutting to required length will render this product non-returnable

Features & benefits

500mm flying leads soldered

Has high quality LED strip using current regulation without experiencing any light drop off

Long lengths (up to 20m) suffer no light loss

Cut points are every 50mm

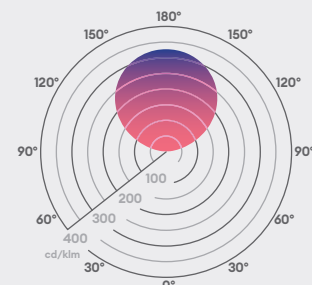
Quick and easy installation with 3M self-adhesive backing

High efficacy of 89lm/W

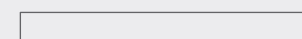
High-grade silicone extruded coating, UV resistant

CRI 90 providing true colour appearance

Beam angle: 120°



20m/50mm



14x5mm

Strip Lights

14.4W Ideal for primary light with 14.4W/m

IP68 Ideal for wet environments with IP68

BESPOKE Bespoke lengths available

Guarantee

5 years Cutting to required length will render this product non-returnable

Features & benefits

500mm flying leads soldered

Has high quality LED strip using current regulation without experiencing any light drop off

Long lengths (up to 10m) suffer no light loss

Cut points are every 50mm

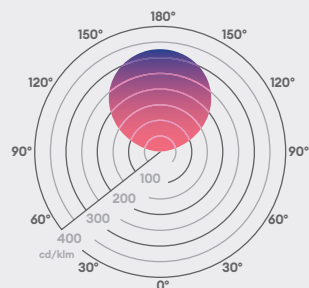
Quick and easy installation with 3M self-adhesive backing

High efficacy of 87lm/W

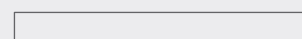
High-grade silicone extruded coating, UV resistant

CRI 90 providing true colour appearance

Beam angle: 120°



10m/50mm



14x5mm



LSC84

14.4 W/m, IP68, 24V current regulated, high CRI, self-adhesive, waterproof flexible strip

Features

Strip type	Flexible tape
IP rating	IP68
CSP switchable	Single CCT
Bespoke lengths	Yes
Self-adhesive backing	Yes
Dimmable option	Driver dependent
LED/m	120
Input	24V DC
LED lifetime	L70 60,000h
Colour rendering Index	CRI>90
Colour consistency	SDCM3

Installation information

Bathroom zone	0
Construction material	Flexible tape with Silicone coating
Maximum running length	10 m
Weight	147g per meter
Maximum ambient temperature	-20°C - 40°C
Electric class (1, 2, 3)	3

Photometrics @ 25°C

Product code	Reel length	W	CCT	△	lm	lm/W	Energy
LSC8427400	40 m	14.4W/m	2700K	120°	1050	73	
LSC8430400	40 m	14.4W/m	3000K	120°	1150	80	
LSC8440400	40 m	14.4W/m	4000K	120°	1250	87	

Energy rating is a reflection of the LED light source.

Wiring information

Cable / flying lead	Supplied with 500mm, 0.5mm ² flying lead from one end
Type of wiring required	Parallel

Recommended LED drivers

Product code	Input	SELV	Dimming	Bathroom zone	Products per driver
LSD6024	220-240V	Yes	Yes (with PDCINT 1-10V)	0 (1 when dimming)	4m Max
LSD12024	220-240V	Yes	Yes (with PDCINT 1-10V)	0 (1 when dimming)	8m Max
PSIP25024	220-240V	Yes	Yes (with PDCINT 1-10V)	0 (1 when dimming)	17m Max

Accessories

LED STRIP PROFILE RANGE	Profile range to house adhesive strip	Sold Separately	121
PDCINT1-10V	1-10V, Push, DALI dimming interface for use with 24V LED drivers	Sold Separately	314



LSC86

17.0 W/m, IP68, 24V current regulated, high CRI, self-adhesive, waterproof flexible strip

Features

Strip type	Flexible tape
IP rating	IP68
CSP switchable	Single CCT
Bespoke lengths	Yes
Self-adhesive backing	Yes
Dimmable option	Driver dependent
LED/m	144
Input	24V DC
LED lifetime	L70 60,000h
Colour rendering Index	CRI>90
Colour consistency	SDCM3

Installation information

Bathroom zone	0
Construction material	Flexible tape with Silicone coating
Maximum running length	10 m
Weight	126g per meter
Maximum ambient temperature	-20°C - 40°C
Electric class (1, 2, 3)	3

Photometrics @ 25°C

Product code	Reel length	W	CCT	Beam angle	lm	lm/W	Energy
LSC8627400	40 m	17.0W/m	2700K	120°	1250	74	
LSC8630400	40 m	17.0W/m	3000K	120°	1350	79	
LSC8640400	40 m	17.0W/m	4000K	120°	1400	82	

Energy rating is a reflection of the LED light source.

Wiring information

Cable / flying lead	Supplied with 500mm, 0.5mm ² flying lead from one end
Type of wiring required	Parallel

Recommended LED drivers

Product code	Input	SELV	Dimming	Bathroom zone	Products per driver
PS7524	220-240V	Yes	Yes (with PDCINT 1-10V)	0 (l when dimming)	3m Max
PSIP15024	220-240V	Yes	Yes (with PDCINT 1-10V)	0 (l when dimming)	8m Max
PSIP25024	220-240V	Yes	Yes (with PDCINT 1-10V)	0 (l when dimming)	14m Max

Accessories

LED STRIP PROFILE RANGE	Profile range to house adhesive strip	Sold Separately	121
PDCINT1-10V	1-10V, Push, DALI dimming interface for use with 24V LED drivers	Sold Separately	314

Strip Lights

17W/m

Ideal for primary light with 17W/m

IP68

Ideal for wet environments with IP68

BESPOKE

Bespoke lengths available

Guarantee

5 years Cutting to required length will render this product non-returnable

Features & benefits

500mm flying leads soldered

Has high quality LED strip using current regulation without experiencing any light drop off

Long lengths (up to 10m) suffer no light loss

Cut points are every 41.6mm

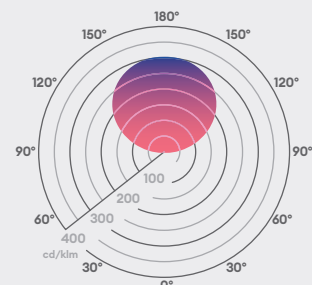
Quick and easy installation with 3M self-adhesive backing

High efficacy of 82lm/W

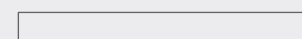
High-grade silicone extruded coating, UV resistant

CRI 90 providing true colour appearance

Beam angle: 120°



10m/41.6mm



14x5mm

Strip Lights



Bright enough to be the main, or primary, source of light



High efficiency up to 160 lumens per watt



Dotless light in profile

Guarantee

5 years

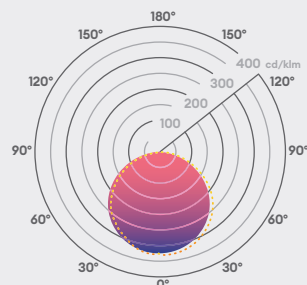
Features & benefits

238 Led chips per metre

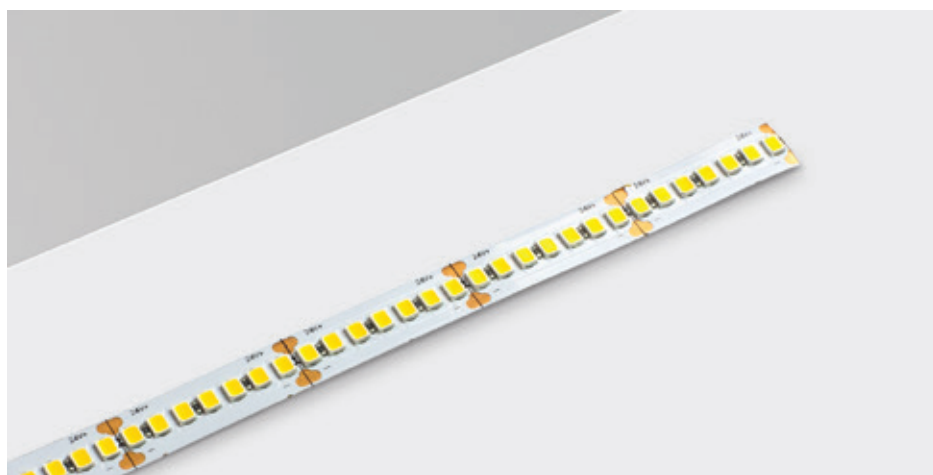
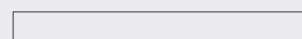
High lumen output at approx 2000 lm/m

Cut points every 29.4mm

Beam angle: 120°



5m/29.4mm



LSP

LED Strip Primary, 14W/m, IP20, 5m

Features

Strip type	Flexible tape
IP rating	IP20
CSP switchable	Single CCT
Bespoke lengths	Yes
Self-adhesive backing	Yes
Dimmable option	Driver dependent
LED/m	238
Input	24V DC
LED lifetime	L70 54,000h
Colour rendering Index	CRI>80
Colour consistency	SDCM4

Installation information

Bathroom zone	N/A
Construction material	Copper
Maximum running length	5 m
Weight	170g
Maximum ambient temperature	40°C
Electric class (1, 2, 3)	1

Photometrics @ 25°C

Product code	Reel length	W	CCT	△x	lm	lm/W	Energy
LSP195027	5 m	14W/m	2700K	120°	1960	140	
LSP205030	5 m	14W/m	3000K	120°	2000	143	
LSP225040	5 m	14W/m	4000K	120°	2240	160	

Energy rating is a reflection of the LED light source.

Wiring information

Cable / flying lead	300mm Flying Lead
Type of wiring required	Parallel

Recommended LED drivers

Product code	Input	SELV	Dimming	Bathroom zone	Products per driver
LSD6024	220-240V	Yes	Yes (with PDCINT 1-10V)	Outside zones	4m Max
LSD12024	220-240V	Yes	Yes (with PDCINT 1-10V)	Outside zones	8m Max
PSIP25024	220-240V	Yes	Yes (with PDCINT 1-10V)	Outside zones	17m Max

Accessories

LSPLA21314	2m, 10mm deep Plaster in profile & opal diffuser	Sold Separately	123
LSK2210SS	10mm Strip to Strip Fast Fix Connector	Sold Separately	126
LSK2210SD	10mm Strip to Driver Fast Fix Connector	Sold Separately	126
LSK2210FB	10mm Strip to Strip Fast Fix Flexible Bend	Sold Separately	126
LSK2210LB	10mm Strip to Strip Fast Fix 'L' Bend	Sold Separately	126
PDCINT1-10V	1-10V dimming interface for use with 24V LED drivers	Sold Separately	314



COF Strip

COF Dotless LED Strip, 8W/m, 5m reel with self adhesive backing

Features

Strip type	Dotless flexible tape
IP rating	IP20
CSP switchable	Single CCT
Bespoke lengths	No
Self-adhesive backing	Yes
Dimmable option	Driver dependent
LED/m	280
Input	24V DC
LED lifetime	L90 36,000h
Colour rendering Index	CRI>90
Colour consistency	SDCM4

Installation information

Bathroom zone	N/A
Construction material	Flexible tape
Maximum running length	2.5 m
Weight	20g/m
Maximum ambient temperature	-20°C - 40°C
Electric class (1, 2, 3)	3

Photometrics @ 25°C

Product code	Reel length	W	CCT	∠	lm	lm/W	Energy
LSFA0727050	5 m	8W/m	2700K	140°	680	85	
LSFA0730050	5 m	8W/m	3000K	140°	690	86	
LSFA0740050	5 m	8W/m	4000K	140°	730	91	

Energy rating is a reflection of the LED light source.

Wiring information

Cable / flying lead	Supplied with 500mm, 2x0.5mm ² flying lead from one end
Type of wiring required	Parallel

Recommended LED drivers

Product code	Input	SELV	Dimming	Bathroom zone	Products per driver
PS3024B	220-240V	Yes	Yes (with PDCINT 1-10V)	Outside zones	3m Max
PS7524	220-240V	Yes	Yes (with PDCINT 1-10V)	Outside zones	9m Max
PSIP15024	220-240V	Yes	Yes (with PDCINT 1-10V)	Outside zones	18m Max

Accessories

LED STRIP PROFILE RANGE	Profile range to house adhesive strip	Sold Separately	121
PDCINT1-10V	1-10V dimming interface for use with 24V LED drivers	Sold Separately	314

Strip Lights

- Ideal for accent lighting with 8W/m
- Ideal for living room and hallways with IP20 rating
- Dotless LED strip

Guarantee

3 years

Features & benefits

High quality LED strip maintaining light quality and consistency

Available in 5m reels

CRI 90 providing true colour appearance

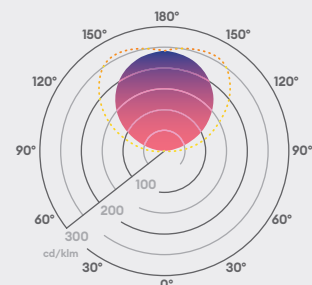
Flexible strip to allow installation in a variety of applications and uneven surfaces

Quick and easy installation with 3M self-adhesive backing

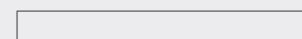
Cut points at every 29.4mm

500mm flying leads attached

Beam angle: 140°



5m/29.4mm



8mm

Strip Lights



Ideal for accent light (6.5W/m)



Ideal for wet environments with IP67 rating



Side bending strip

Guarantee

5 years

Features & benefits

500mm flying leads soldered

High quality LED strip maintaining light quality and consistency

Long lengths (LSNS73 up to 10m / LSNS75 up to 5m) suffer no light loss

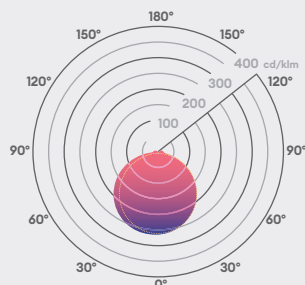
Cut points are every 50mm

A range of fixing accessories, both rigid and flexible, allowing various installations. Fixing accessories need to be acquired to allow install the neon strip

Has a high-grade silicone extruded coating, UV and Chemicals resistant

CRI 80 providing true colour appearance

Beam angle: 120°



3m,5m,10m/50mm



LSNS73

6.5 W/m, IP67, 24V constant voltage, side bend, waterproof flexible neon strip

Features

Strip type	Flexible tape
IP rating	IP67
CSP switchable	Single CCT
Bespoke lengths	No
Self-adhesive backing	No
Dimmable option	Driver dependent
LED/m	140
Input	24V DC
LED lifetime	L70 60,000h
Colour rendering Index	CRI>80
Colour consistency	SDCM3

Installation information

Bathroom zone	0, 1 (with dimming)
Construction material	Flexible tape with Silicone coating
Maximum running length	10 m
Weight	234g per meter
Maximum ambient temperature	-20°C - 40°C
Electric class (1, 2, 3)	3

Photometrics @ 25°C

Product code	Reel length	W	CCT	Beam angle	lm	lm/W	Energy
LSNS7327030	3 m	6.5W/m	2700K	120°	290	45	127
LSNS7327050	5 m	6.5W/m	2700K	120°	290	45	127
LSNS7327100	10 m	6.5W/m	2700K	120°	290	45	127
LSNS7330030	3 m	6.5W/m	3000K	120°	310	47	127
LSNS7330050	5 m	6.5W/m	3000K	120°	310	47	127
LSNS7330100	10 m	6.5W/m	3000K	120°	310	47	127
LSNS7340030	3 m	6.5W/m	4000K	120°	315	48	127
LSNS7340050	5 m	6.5W/m	4000K	120°	315	48	127
LSNS7340100	10 m	6.5W/m	4000K	120°	315	48	127

Energy rating is a reflection of the LED light source.

Wiring information

Cable / flying lead	Supplied with 500mm, 0.5mm² flying lead from one end
Type of wiring required	Parallel

Recommended LED drivers

Product code	Input	SELV	Dimming	Bathroom zone	Products per driver
LSD6024	220-240V	Yes	Yes (with PDCINT 1-10V)	0 (1 when dimming)	9m Max
PS7524	220-240V 50/60Hz	Yes	Yes (with PDCINT 1-10V)	0 (1 when dimming)	11m Max
PSIP15024	220-240V 50/60Hz	Yes	Yes (with PDCINT 1-10V)	0 (1 when dimming)	23m Max

Accessories

LSNS12	Range of connection and fixing accessories	Sold Separately	127
LED STRIP PROFILE RANGE	Profile range to house neon strip	Sold Separately	121



LSNS75

9.6 W/m, IP67, 24V constant voltage, side bend, waterproof flexible neon strip

Features

Strip type	Side bending
IP rating	IP67
CSP switchable	Single CCT
Bespoke lengths	No
Self-adhesive backing	No
Dimmable option	Driver dependent
LED/m	140
Input	24V DC
LED lifetime	L70 60,000h
Colour rendering Index	CRI>80
Colour consistency	SDCM3

Installation information

Bathroom zone	0, 1 (with dimming)
Construction material	Flexible tape with Silicone coating
Maximum running length	5 m
Weight	234g per meter
Maximum ambient temperature	-20°C - 40°C
Electric class (1, 2, 3)	3

Photometrics @ 25°C

Product code	Reel length	W	CCT	∠	lm	lm/W	Energy
LSNS7527030	3 m	9.6W/m	2700K	120°	450	47	
LSNS7527050	5 m	9.6W/m	2700K	120°	450	47	
LSNS7530030	3 m	9.6W/m	3000K	120°	460	48	
LSNS7530050	5 m	9.6W/m	3000K	120°	460	48	
LSNS7540030	3 m	9.6W/m	4000K	120°	470	49	
LSNS7540050	5 m	9.6W/m	4000K	120°	470	49	

Energy rating is a reflection of the LED light source.

Wiring information

Cable / flying lead	Supplied with 500mm, 0.5mm² flying lead from one end
Type of wiring required	Parallel

Recommended LED drivers

Product code	Input	SELV	Dimming	Bathroom zone	Products per driver
LSD6024	220-240V	Yes	Yes (with PDCINT1-10V)	0 (l when dimming)	6m Max
LSD12024	220-240V	Yes	Yes (with PDCINT1-10V)	0 (l when dimming)	12m Max
PSIP25024	220-240V	Yes	Yes (with PDCINT1-10V)	0 (l when dimming)	26m Max

Accessories

LSNS12	Range of connection and fixing accessories	Sold Separately	127
LED STRIP PROFILE RANGE	Profile range to house neon strip	Sold Separately	121

Strip Lights

- Ideal for atmospheric light with 9.6W/m
- Ideal for wet environments with IP67 rating
- Side bending strip

Guarantee

5 years

Features & benefits

500mm flying leads soldered

High quality LED strip maintaining light quality and consistency

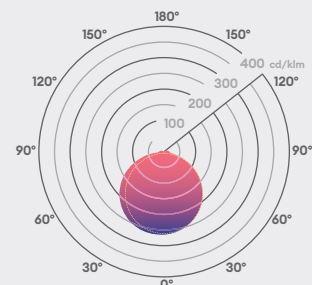
Long lengths (LSNS73 up to 10m / LSNS75 up to 5m) suffer no light loss

Cut points are every 50mm

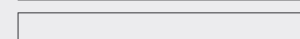
A range of fixing accessories, both rigid and flexible, allowing various installations. Fixing accessories need to be acquired to allow install the neon strip

Has a high-grade silicone extruded coating, UV and Chemicals resistant

Beam angle: 120°



3m, 5m / 50mm



17mm
12mm

Strip Lights



Ideal for accent lighting with 6.5W/m



Ideal for wet environments with IP67 rating



Top bending strip

Guarantee

5 years

Features & benefits

500mm flying leads soldered

High quality LED strip maintaining light quality and consistency

Long lengths (LSNS73 up to 10m / LSNS75 up to 5m) suffer no light loss

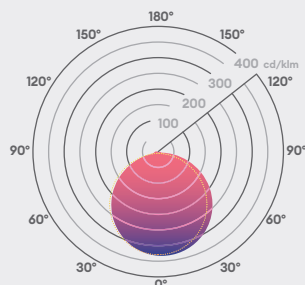
Cut points are every 50mm

A range of fixing accessories, both rigid and flexible, allowing various installations. Fixing accessories need to be acquired to allow install the neon strip

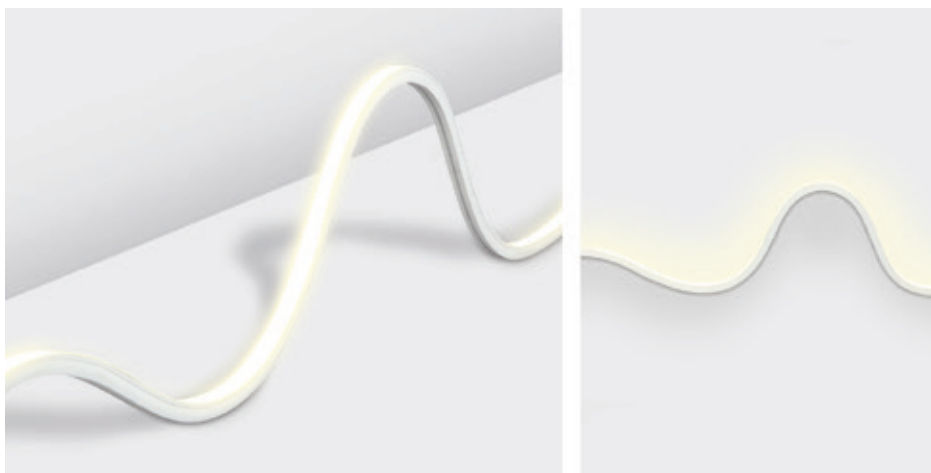
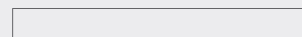
Has a high-grade silicone extruded coating, UV and Chemicals resistant

CRI 80 providing true colour appearance

Beam angle: 120°



3m,5m,10m/50mm



LSNT73

6.5 W/m, IP67, 24V constant voltage, top bend, waterproof flexible neon strip

Features

Strip type	Top bending
IP rating	IP67
CSP switchable	Single CCT
Bespoke lengths	No
Self-adhesive backing	No
Dimmable option	Driver dependent
LED/m	140
Input	24V DC
LED lifetime	L70 60,000h
Colour rendering Index	CRI>80
Colour consistency	SDCM3

Installation information

Bathroom zone	0, 1 (with dimming)
Construction material	Flexible tape with Silicone coating
Maximum running length	10 m
Weight	172g per meter
Maximum ambient temperature	-20°C - 40°C
Electric class (1, 2, 3)	3

Photometrics @ 25°C

Product code	Reel length	W	CCT	Beam angle	lm	lm/W	Energy
LSNT7327030	3 m	6.5W/m	2700K	120°	510	78	
LSNT7327050	5 m	6.5W/m	2700K	120°	510	78	
LSNT7327100	10 m	6.5W/m	2700K	120°	510	78	
LSNT7330030	3 m	6.5W/m	3000K	120°	520	80	
LSNT7330050	5 m	6.5W/m	3000K	120°	520	80	
LSNT7330100	10 m	6.5W/m	3000K	120°	520	80	
LSNT7340030	3 m	6.5W/m	4000K	120°	530	81	
LSNT7340050	5 m	6.5W/m	4000K	120°	530	81	
LSNT7340100	10 m	6.5W/m	4000K	120°	530	81	

Energy rating is a reflection of the LED light source.

Wiring information

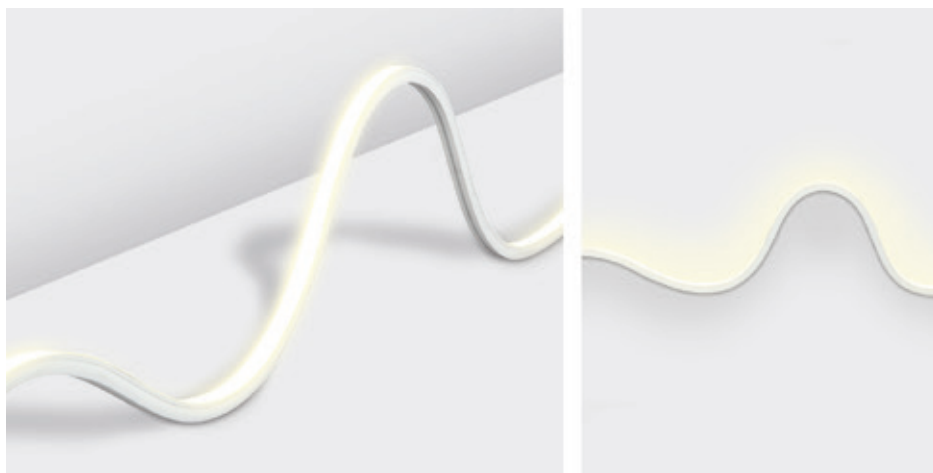
Cable / flying lead	Supplied with 500mm, 0.5mm² flying lead from one end
Type of wiring required	Parallel

Recommended LED drivers

Product code	Input	SELV	Dimming	Bathroom zone	Products per driver
LSD6024	220-240V	Yes	Yes (with PDCINT 1-10V)	0 (1 when dimming)	9m Max
PS7524	220-240V 50/60Hz	Yes	Yes (with PDCINT 1-10V)	0 (1 when dimming)	11m Max
PSIP15024	220-240V 50/60Hz	Yes	Yes (with PDCINT 1-10V)	0 (1 when dimming)	23m Max

Accessories

LSNTI3	Range of connection and fixing accessories	Sold Separately	127
LED STRIP PROFILE RANGE	Profile range to house neon strip	Sold Separately	121



LSNT75

9.6 W/m, IP67, 24V constant voltage, top bend, waterproof flexible neon strip

Features

Strip type	Top bending
IP rating	IP67
CSP switchable	Single CCT
Bespoke lengths	No
Self-adhesive backing	No
Dimmable option	Driver dependent
LED/m	140
Input	24V DC
LED lifetime	L70 60,000h
Colour rendering Index	CRI>80
Colour consistency	SDCM3

Installation information

Bathroom zone	0, 1 (with dimming)
Construction material	Flexible tape with Silicone coating
Maximum running length	5 m
Weight	172g per meter
Maximum ambient temperature	-20°C - 40°C
Electric class (1, 2, 3)	3

Photometrics @ 25°C

Product code	Reel length	W	CCT	∠	lm	lm/W	Energy
LSNT7527030	3 m	9.6W/m	2700K	120°	770	80	
LSNT7527050	5 m	9.6W/m	2700K	120°	770	80	
LSNT7530030	3 m	9.6W/m	3000K	120°	780	81	
LSNT7530050	5 m	9.6W/m	3000K	120°	780	81	
LSNT7540030	3 m	9.6W/m	4000K	120°	792	82	
LSNT7540050	5 m	9.6W/m	4000K	120°	792	82	

Energy rating is a reflection of the LED light source.

Wiring information

Cable / flying lead	Supplied with 500mm, 0.5mm² flying lead from one end
Type of wiring required	Parallel

Recommended LED drivers

Product code	Input	SELV	Dimming	Bathroom zone	Products per driver
LSD6024	220-240V	Yes	Yes (with PDCINT 1-10V)	0 (1 when dimming)	6m Max
LSD12024	220-240V	Yes	Yes (with PDCINT 1-10V)	0 (1 when dimming)	12m Max
PSIP25024	220-240V	Yes	Yes (with PDCINT 1-10V)	0 (1 when dimming)	26m Max

Accessories

LSNT13	Range of connection and fixing accessories	Sold Separately	127
LED STRIP PROFILE RANGE	Profile range to house neon strip	Sold Separately	121

Strip Lights



Ideal for atmospheric light with 9.6W/m



Ideal for wet environments with IP67 rating



Top bending strip

Guarantee

5 years

Features & benefits

500mm flying leads soldered

High quality LED strip maintaining light quality and consistency

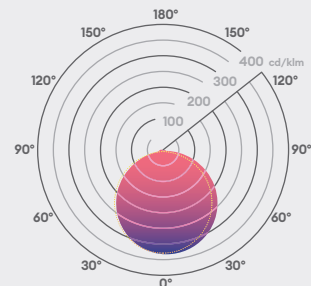
Long lengths (LSNS73 up to 10m / LSNS75 up to 5m) suffer no light loss

Cut points are every 50mm

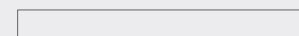
A range of fixing accessories, both rigid and flexible, allowing various installations. Fixing accessories need to be acquired to allow install the neon strip

Has a high-grade silicone extruded coating, UV and Chemicals resistant

Beam angle: 120°



3m, 5m/50mm







SP50

IP20 LED strip pack and driver

Features

Strip type	Flexible tape
IP rating	IP20
CSP switchable	Single CCT
Bespoke lengths	No
Self-adhesive backing	Yes
Dimmable option	Driver dependent
LED/m	120
Input	220-240V AC
LED lifetime	L70 30,000h
Colour rendering Index	CRI>80
Colour consistency	SDCM5

Installation information

Bathroom zone	2
Construction material	Flexible tape
Maximum running length	5 m
Weight	53g per meter
Maximum ambient temperature	40°C
Electric class (1, 2, 3)	3

Photometrics @ 25°C

Product code	Reel length	W	CCT	Beam angle	lm	lm/W	Energy
SP5027	5 m	4.8W/m	2700K	120°	430	90	
SP5030	5 m	4.8W/m	3000K	120°	450	94	
SP5040	5 m	4.8W/m	4000K	120°	490	102	

Energy rating is a reflection of the LED light source.

Wiring information

Cable / flying lead	Supplied with a minimum of 200mm flying lead from one end
Type of wiring required	Parallel

Accessories

LED STRIP PROFILE RANGE	Profile range to house adhesive strip	Sold Separately	121
PDCINT1-10V	1-10V dimming interface for use with 24V LED drivers	Sold Separately	314

Strip Lights



Ideal for accent lighting with 4.8W/m



Ideal for living room and hallways with IP20 rating



Quick and easy installation with 3M self-adhesive backing

Guarantee

3 years

Features & benefits

Driver included

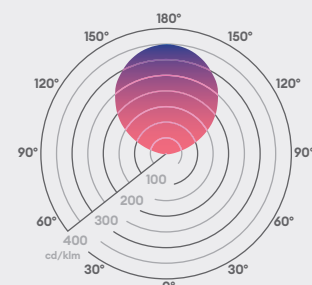
Excellent for accent lighting

Cut points every 100mm

3M self-adhesive backing for secure and easy installation

Supplied in a resealable, antistatic bag to protect during transit

Beam angle: 120°



5m/100mm

